

**AN ASSESSMENT OF TOURISM POTENTIALS IN KADUNA  
STATE, NIGERIA.**

**BY**

**ATUK JIYO JAMES**

**B.Sc (GEOGRAPHY) A. B. U.**

**M.SC /ENV-DES/01093/2008-09**

**A THESIS SUBMITTED TO THE POST GRADUATE SCHOOL, AHMADU BELLO  
UNIVERSITY IN PARTIAL FULFILLMENT FOR THE AWARD OF M.SC. (TOURISM  
AND RECREATIONAL PLANNING)**

**DEPARTMENT OF URBAN AND REGIONAL PLANNING,**

**FACULTY OF ENVIRONMENTAL DESIGN,**

**AHMADU BELLO UNIVERSITY,**

**ZARIA.**

**APRIL, 2014.**

## **DECLARATION**

I declare that the thesis entailed Assessment of tourism potentials in Kaduna State has been performed by me in the Department of Urban and Regional Planning under the supervision of Tpl.E.S.Lema. The information derived from the literature has been duly acknowledged in the text and a list of references provided. No part of this project thesis was previously presented for another degree or diploma at any university.

---

Name of students

---

Signature

---

Date

**CERTIFICATION**

This thesis entitled Assessment of tourism potentials in Kaduna state by ATUK JIYO JAMES meets the regulations governing the award of the degree of Masters of Science Tourism and Recreation Planning of Ahmadu Bello University, and is approved for

.....

.....

Late Tpl .E. S. Lema  
Chairman, Supervisory Committee

Date

.....

.....

Late Mr., B.A. Dada  
Member, Supervisory Committee

Date

.....

.....

Dr. M. Sani  
Head of Department

Date

.....

.....

Prof. Adebayo Joshua  
Dean, Post Graduate School

Date

## **DEDICATION**

TO MY PERSONAL LORD AND SAVIOUR AND MY PARENTS

FOR ALL YOUR LOVE, CARES AND UNDERSTANDING.

## ACKNOWLEDGEMENT

I wish to express my profound gratitude and sincere appreciation to my supervisor's, S. lema and B.A dada (may there soul rest in perfect peace Amen) who were helpful and offered invaluable assistance, support and guidance. Deepest gratitude goes to the entire members of academic staffs, for their assistance and constructive comments on this thesis. It is a pleasure to convey my gratitude to my head of department, Dr. Ma,aruf Sani Prof. James.B.kalto, and Dr. Ahmed , for there supervision, advice and guidance from the very early stage of this research as well as using their time, following up this thesis and giving critical comments about it. I gratefully acknowledge them for their unflinching encouragement and originality which has triggered and nourished my intellectual maturity. Iam indebted to them more than they knows. It would not have been possible to write this M.sc thesis without the support of the intelligent people around me, to only few of whom is possible to give particular mention here. Many thanks goes to Mr. Ojibo, Mallam Yahaya, Bununu, Shittu, and Usman who always offered constructive contributions in the course of this research. Special thanks also to my post graduates classmate's, in Urban Management and Tourism Class, for there concern and understanding. Iam most grateful to the Director, department of statistics and planning, ministry of tourism and culture Kaduna state, Alh. Ashafa, the tourism experts and experts from different fields of study for providing me with data, which has been valuable and reliable.

My sincere appreciation to my brother and his wife, Major and Mrs. Rowland Atuk, for there moral and financial support rendered in the course of this research, my fiancée Victoria Auta, deserves special mention for her understanding, endless love and prayers through the duration of my studies. To my Mum and Dad, Chief. and Mrs. Samuel Atuk, thanks for being supportive and caring, giving me your unequivocal support throughout, and always. Finally, I would like to thank everybody who was important to the successful realization of this thesis.

Atuk Jiyo James

## **ABSTRACT**

Tourism as an agent of development, leads to a lot of benefit's, Nigeria as a country richly endowed with a wide range of cultural and natural resource's relative to other nation's in Africa and on a global level, most of which are largely untapped. There are many approaches to assess these resource potentials of which studies have been done in some parts of the world. but despite the availability of these potentials in Kaduna state, the level of tourist influx still remains low, which forms the basis of this study, to assess the tourism potentials, there challenges and prospects in Kaduna state. Opinion's of experienced tourist, experts in different fields of study, were sampled with questionnaires at different potential spot's to cover the three geographical zones of the state. Data were collected and analyzed using weighted sum model (WSM), through ranking and scaling techniques. The outcomes suggest major shortcomings are traced to inadequate infrastructures, funding, advertisement, and insecurity in these potentials among others. The study determine the potential values of different potentials site's, and proposes clustering of the tourist spots to enhanced their potentials values and made recommendations to improve the industry in other to boost tourism industry in the state.

## TABLE OF CONTENTS

Title page	ii
Declaration	iii
Certification	iv
Dedication	v
Acknowledgement	vi
Abstract	vii
Table of contents	viii
List of Tables	xii
List of Figures	xiv
List of Plates	xv

## CHAPTER ONE

1.0	Introduction	1
1.1	Statement of Research	3
1.2	Research Questions	4
1.3	Aim	4
1.4	Objectives	5
1.5	Scope	5
1.6	Significance of the Study	5
1.7	Background Information of the Study Area	6

1.8	Definitions of Operational Terms	11
-----	----------------------------------	----

## **CHAPTER TWO**

### **LITERATURE REVIEW**

2.0	Introduction	14
2.1	Concept of Tourism	14
2.2	Important Strategic Tourism Destinations and Economic Impact	15
2.3	Destination Competitiveness Model	22
2.4	Criteria for Identifying Tourism Potentials	25
2.5	Classification of Tourism Potentials	28
2.6	Technique's for Assessing Tourism Potentials	33
2.7	Tourism Development Potential Base in Kaduna State	35
2.7.1	Emir's of Zazau Palace	35
2.7.2	Nok Culture	36
2.7.3	Bernart Faggs House	37
2.7.4	Kagoro Hill	38
2.7.5	Kangimi Dam	39
2.7.6	Matriga Water Fall	40
2.7.7	General Hassan Usman Park	41
2.7.8	Trappco Ranch and Resort	42
2.7.9	Fifth Chucker	43
2.8	Status of Tourism Projects at Potential Site's in Kaduna state	44
2.8.1	The Kangimi Resort	45



2.8.2	The Kagoro Hill Holiday Resort	46
2.8.3	The New Kaduna City	47
2.8.4	Nok Terracotta Archeological Site	48
2.8.5	Zaria Dam Resort	48
2.8.6	General Hassan Usman Park	49
2.8.7	Gurara Dam Recreatinal Centre/Holiday Resort	49
2.8.8	Bakwa Turunku	50
2.8.9	Queen Amina of zazzau	50
2.9.0	The Ruins of Zaria City Wall	51
2.9.1	St' Bartholomew Anglican Church Wusasa Zaria	51
2.9.2	Emir's Palace in Zaria	51
2.9.3	Arewa House	51

## **CHAPTER THREE**

### **METHODOLOGY**

3.0	Introduction	52
3.1	Types of data and sources	52
3.1.1	Data Required	52
3.2	Method of data collection	54
3.3	Sampling techniques	54
3.3.1	Sample size	55

3.4	Method of data analysis	59
3.4.1	Concept of Weighted sum Model (WSM)	59

#### **CHAPTER FOUR**

4.0.	Data presentation and analysis	64
4.1	Introduction	64
4.2.	Results from weighted sum model (WSM)	64

#### **CHAPTER FIVE**

##### Summary, recommendations and conclusions

5.0	Introduction	78
5.1	Summary	78
5.2.	General Recommendation	79
5.2,1	Recommendation at the State Ministry of Culture and Tourism	81
5.3	Conclusion	83
	References	84
	Appendices	89

## **LIST OF TABLES**

Table 2.1: The Four Categories of Potentials	30
Table 3.1: Types of Data variables required and Source's	53
Table 3.3: Showing the Three Senatorial Zones and their Composition	54
Table 3.3.1: Tourist Zones, with their Tourist Development Potentials Spots	55
Table 3.4.1: Sample Example Showing Method of Ranking	61
Table 4.2.1: Weight of Attribute level -2	66
Table 4.2.2: Interpretation of scaling attribute	68
Table 4.2.3: Potential Value's of Tourist spots in Kaduna State	70
Table 4.2.4: Summary of Clustered Based Potential Data	75

## **LIST OF FIGURES**

Fig 1: Map of Nigeria Showing the Study Area	14
Fig 2: Destination Competitiveness Tourism Model	40
Fig 3: Tourism development potential zones in Kaduna state	48
Fig 4: Showing clustered potential value's zones in Kaduna state	66
Fig 5: proposed tourism zones, Kaduna state	79

## LIST OF PLATES

Plate I: Emir's of Zazzau Palace	19
Plate II: Nok Village in Jaba L.G.A, Kaduna state	20
Plate III: Bernard Fagg House at Nok village in Jaba	21
Plate IV: Kagoro Hill and Life on Top the Hill, at Kaura in Kaduna State	21
Plate V: Kangimi Dam at Igabi L.G.A in Kaduna state	24
Plate VI: Matriga Water Falls Zango kataf L.G.A Situated at Kafanchan	25
Plate VII: Hassan Usman Park Situated at Kabala, Kaduna North	26
Plate VIII: Trappco Ranch and Resort	27
Plate IX: Horses at Fifth Chucker, Igabi	28

## CHAPTER ONE

### 1.0 INTRODUCTION

The profitability of international tourism industry has garnered widespread recognition of tourism as a promising development agent for developing countries. Throughout the past fifty years, tourism has rapidly spread and has emerged as a major export sector in many countries (UNWTO, 2007). The decision to adopt tourism as an agent of development has been largely based on the expectation that tourism can:(a) increased foreign exchange earnings,(b) create employment,(c) attract foreign investment, and(d) positively contribute to local economic and the national balance of payments (Sharply and Telfair, 2002). In other cases it has been said that tourism is turned to as a last option by countries that lack extractable resources, are burdened by foreign debt, and rely on international aid (Brown, 1998).

Kaduna state richly endowed with a wide range of natural and cultural resources relative to other state in Nigeria and on a global level most of which are largely untapped. These resource's fall into protected ecosystems (game reserves and recreational parks), protected landscapes or natural sceneries, cultural sites, coastline, traditional festival and historic relics and monuments (Okechuku, 1990 and Okoli 2001).Kaduna state tourism resources are highly distributed from the south-northern part of Kaduna, which has a geo-cultural pattern, (Okoli 2001).

The availability of these potentials has made the development of tourism industry to undergo a gradual evolution, which each phase reflecting its growing importance in the economy. Despite all these economic, political, cultural and social benefits, tourism development has not been strong politically in Nigeria, especially in Kaduna state. What is really wrong with Nigerian tourism? This is why Ayibe (2007) said that tourism in Nigeria is at

low ebb not only because of economic hardship, but because of all the factors militating against the industry, stating further, he said that unless the challenges facing tourism are identified and solved, Nigerian tourism industry will remain at nascent state.

Tourism development in this research refers to the positive transformation of tourism potentials to tourism products. Also Okoli (2007), defined tourism development as the provision of infrastructures and superstructure, he further stated that, these infrastructures (roads, water supply communication system etc) and superstructure (hotels, motels, guesthouses etc), must be adequate and maintain for tourism to develop. Okoli (2001), Noted that the development of an area for tourism results to economic benefits of foreign exchange earnings, government revenue, employment etc.

The benefits of tourism development have not been fully exploited in Kaduna state, due to nascent state of tourism industries, caused by numerous problems facing the industry (Ayibe, 2008), to tackle these problems we need to uncap and rehearse our potentials as a nation.

The future for tourism in Nigeria is dependent on the opportunities and challenges being exploited and addressed. The diversity of cultural attractions, the friendly disposition of the people, a revamped National Tourism organization, Human Resources Development and new convention Bureau provide key opportunities.

Implementation of Tourism Development master plan will be a major challenge for the government and industry, as will changing the international image of Nigeria. Improving the quality of the product and facilities and putting in place a comprehensive training program me will require a very strong partnership between the public and private sectors.

This study will therefore assess the tourism potentials, there challenges' and prospects in Kaduna state.

## 1.1 STATEMENT OF RESEARCH PROBLEM

The tourism industry in Kaduna state was not given much priority by the state government in the past, (Kaduna state position paper on tourism, Dec, 2004). It was only recently that the industry started receiving the attention it deserves. A ministry of culture and tourism was created in 2003 and charged with the responsibility of preserving, developing and providing all aspect of culture and tourism. A tourism policy was drafted, which is an offshoot of the National tourism policy of Nigeria.

Thrust of the policy implementation with respect to tourism was to: generate foreign exchange, encourage even development, promote tourism based rural-urban integration and cultural exchange, strategies included:

1. Provision of basic infrastructure and tourism facilities.
2. Establish effective organs for the planning, development, promotion and marketing of tourism in and outside Kaduna state.
3. Joint ventures with private and public.
4. Incentives such as tax holidays and soft loans. (KDSG, 2002).
5. Patrol and regulation of the industry.

In line with this the state government identified several tourism development potentials across the state that will boost the tourism sector.

However, it has been observed that in spite of the laudable tourism potentials in the state, coupled with the government interest and afford in developing the tourism sector, the level of tourist inflow in most of these potentials sites identified by the government is still not encouraging (Aniah, 2006). Beside, the lack of adequate empirical data has hindered policy makers and other stakeholders on the viability of most of the existing tourism development potentials in the state. Studies by Eja, Iwara, et-al, (2012), on the success factors

determining Nigeria as a tourist destination shows that most of the states with great tourism potentials still witness a decline of tourist influx, from 5,103 in 2008 to 2,549 in 2011, due to the fact that most of the potentials within there environment has not been provided with adequate facilities and attention. There is no data base or model that has clearly defined the visibility and success factors that have put Kaduna in the league of other states with great tourism potentials.

Although many works has been done on the study of tourism in many destinations,(Chon,1990,Chukwuemeka,2009,,Muazu,2010,Bako,2012,Adeyemi 2012). Most of these works focused on identifying, classifying and analyzing destinations attractiveness , nevertheless there exist a gap about knowing the touristic value of some natural and ancient potentials in Kaduna state , this study will therefore assess these potential in the state to determine there challenges in its development with the view of making recommendation for improvement.

## **1.2 RESEARCH QUESTIONS**

The research will address three fundamental questions

1. What are the tourist values of selected tourism potentials in the study area
2. What constrains the development of tourism potentials in the state?

**1.3 AIM:** The aim of this study is to assess tourism development potentials values in Kaduna state, with a view to making recommendations for improvement. .



## **1.4 OBJECTIVES**

1. To review the tourism concepts, technique's for assessment of tourism potentials.
2. To examine the status of development in some tourism potentials spots in Kaduna State.
3. To assess selected tourism potential values in the state.
4. To make appropriate recommendation's in enhancing tourism in Kaduna state.

## **1.5 SCOPE AND LIMITATIONS**

The scope of this study includes, assessing, tourism potentials using social and physical aspects, which includes accommodation, accessibility, intensity of fairs and festivals, tourist information and guide, food and market, average duration of stay and car parking facilities in potential site's in Kaduna State.

It however does not cover assessment of tourist receipts, statistics of tourist influx, bed occupancy, and was limited to selected natural, historic, parks and resort potentials in the study area.

## **1.6 SIGNIFICANCE OF THE STUDY**

- This study will enable policy makers to assess tourism as a tool for development in the state, so that challenges can be identified and recommendations may be made towards more effective Tourism development.
- It will serve as a relevant document for individuals, government, and corporate organizations interested in developing tourism.
- This study will also contribute to knowledge, which will be useful to researchers in tourism development studies.

## **1.7 BACKGROUND INFORMATION OF THE STUDY AREA**

Kaduna State lies between Latitude 09° 02' N, 11° 33'N and longitude 06° 10 E and 08° 50'E, occupying a landmass of about 48,473.km<sup>2</sup> and total population of 6,066,562 with 3,112,028 males and 2,954,534 females as reflected by the 2006 census result. The state share common boundaries with Niger, Katsina,Kano,Bauchi,Plateau,Nassarawa, and Zamfara states as well as the federal capital, Abuja.

### **Relief:**

River Kaduna is the only major river in the state and takes its source from the highlands around the Jos plateau. it is, however fed by many tributaries and in turn, runs into the river Niger.

Kaduna state is mostly an undulating plateau with parts of the state like Zaria town, kagoro and kwoi areas having protruding hard resistant granite rocks which are as a result of weathering through the ages of previously existing pre-Cambrian rocks. The erosive activities resulted in the outgrowth of rocks forming Inselbergs and large rocky upland region which are attractive for sight- seeing, examples are the Kufena rocks in Zaria, the Kagoro Hills and other interesting rock formations which abound in the state.

### **Climate:**

The state has two distinct seasons-the dry season and the rainy season. The temperature is hot during the dry season and cool during the rainy season, from November to February and cold dry harmattan wind blows across the state, the northern part of the state being affected most. The southern part of the state enjoys heavier rainfall than the northern part.

**Vegetation:**

The state extends from tropical grassland (savannah) in the south to Sudan savannah in the north. The savannah region of the state covers the southern part stretching to Gwantu, south of Kafanchan with prevailing vegetation of tall trees and few shrubs. The Sudan savannah or Sahel covers the northern part of the state, stretching from Zaria down to Ikara and its environs.

**Major urban cities:**

The state has three major cities, Kaduna, Zaria and Kafanchan, other towns includes, Birnin-Gwari, Ikara, and Saminaka, Manchok, Kwoi, Kachia, Kagoro, Zonkwa, Kagarko, Giwa and many others

**Tourist Attractions in Kaduna State:**

1. General Hassan Usman Park
2. Lugard Hall.
3. St, Bartholomew's Anglican Church.
4. Sultan Bello Mosque.
5. The Emir of Zazzau's palace.
6. Matsirga water falls.
7. Kagoro Hills.
8. Zaria dam.

**Parks, Gardens, and Resorts in Kaduna:**

1. General Hassan Usman Park.
2. Kamuku National Park.
3. Trappco Ranch and Resort.
4. Pixie-Dixie Amusement Park and  
5<sup>TH</sup> Chucker.

**Cultural and religious Festivals (National Festivals):**

1. Durbar.
2. Afan.
3. Tuk-Ham.

**Religious Festivals:**

1. Eid-EL-Fitr.
2. Eid-EL-Kabir
3. Maulud
3. Christmas
4. Easter.

There are a host of other ethnic groups within the state that have similar colorful festivals where some boisterous theatrical performances are displayed which can also carry one to a sheer exhilaration of fun. Amongst them are:

- The Ikulu Festival, known as Unum Akulu carried out last Saturday of every year.
- The Akat Festival.
- The Sholio.

- The Baranzan.
- The Fantswam.
- The Angham.
- At yap.
- Tsam.
- The Gbagyi Festival.

**Ancient Settlements of historic importance in the State:**

1. Turunku Site.
2. The Ancient Nok Settlement.

Others: There are other similar Ancient Sites that exist across the state, these include-Kamuru Dustse (Gupang-Akong), Dutsen Bako and Fansil Settlements in Zango-Kataf Local Government Area. Also found are Kufena Settlement Site, Kufai Kajuru, among other

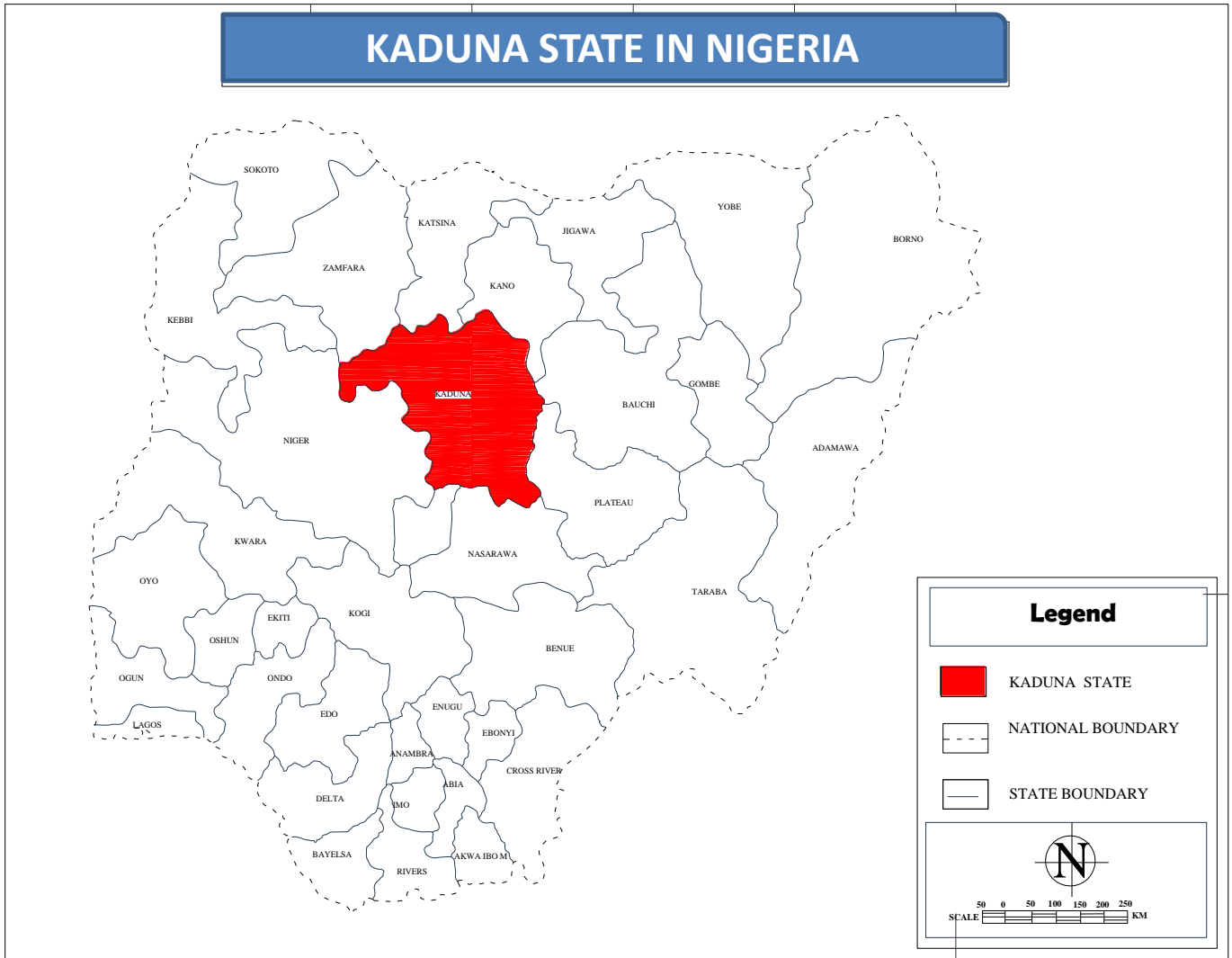


Fig I: Map of Nigeria Showing the Study Area

## **1.8 DEFINATION OF OPERATIONAL TERMS:**

### **Tourism:**

This is defined as the temporary movement of people to destinations, the activities undertaken in these destinations, and the facilities in place to cater for these activities (Mathieson and wall, 1982)

### **Tourist:**

Traveler for pleasure, who visits places away from home or for personal advantage who travel in order to take advantage of a particular service or benefit that, is not available at home. (Encarta English dictionaries, 2009).

### **Status:**

This is a condition that is subject to change (Encarta dictionaries 2009).

### **Development:**

This is best described as a “philosophy”, as a process the outcome or product of that process, and a plan guiding the process towards desired objectives. (Sharply 2002).

### **Tourism development:**

Refers to the positive transformation of tourism potentials to tourism products, also Okoli (2001) define tourism development as the provision of infrastructures and superstructure.

**Assessment:**

Evaluation, which is a judgment or opinion of somebody, especially one that appraised effectiveness or usefulness (Encarta dictionaries 2009).

**Tourism potential**

Can be defined as the ability of an area (territory) to form a complete tourism product (“a complex of material and nonmaterial elements to provide satisfaction of needs and benefits to the tourist, offered for consumption” – Krippendorf, 1980) and develop an economically vital tourism.

**Effectiveness:**

This is the degree to which an organization moves toward the attainment of its mission and realizes its goals, IDRC (1999).

**Policy:**

This is course of action, a program of actions adopted by a person, group, or government or the set of principles of which they are based (English dictionary 2008)

**Indicator:**

This is “a parameter or a value derived from parameters, which points, provides information about, and describes the state of a phenomenon/environment/area, with a significance extending that directly associated with a parameter value” (OECD, 1994).



**Institution:**

Important organization, a large organization that is important in the community, (Encarta English Dictionary, 2005).

**Tourist spot/site:**

The characteristic of an area, to attract tourist and develop, (Encarta English dictionary, 2009).

## **CHAPTER TWO**

### **LITERATURE REVIEW**

#### **2.0 INTRODUCTION**

This chapter reviews the existing literature's relating this study, among issue's reviewed are, Concept of tourism, Important strategic tourism destinations and attractions and economic impact, Destination competitive tourism model, Criteria for identifying tourism potentials, Classifications of tourism potentials, Techniques for assessing tourism potentials among others.

#### **2.1 THE CONCEPT OF TOURISM**

Many countries regard tourism as an agent of development. In most tourism literature's, most emphasis is on economic benefits derived from tourism, such as contribution to foreign exchange earnings, regional development, government revenues, and creation of employment and income.

Okpolo et al (2002) sees tourism as a complex and pervasive phenomenon which touches all aspects of man and society, cultural, social, historical and physical environments. Because of it's complex nature tourism can be treated in a multidisciplinary way, since various disciplines have been identified to have leading roles to play in the study of tourism as well as in its definition. Okpoko explain the disciplines to include the fields of geography, economics, management, archaeology e.t.c. However, according to Lickorich (1991), tourism is more than an economic activity; it involves massive interaction of people demanding a wide range of services, facilities and inputs which generate opportunities and challenges to the host countries. Lickorich has the view that tourism is the world's largest industry and as a result the practice of

tourism is becoming increasingly sophisticated, its development is concern with a wide range of services, which includes, transport, accommodation, attractions and infrastructures.

Tourism is also regarded as a complex trade covering all movements of people outside their own communities for all purposes except migration or regular daily work.

The above definitions, suggest that the concept of tourism is broad and it encompass different phenomena.

The world tourism organization (WTO) is the lead agency responsible for the development of standardized tourism definitions. This agency states that tourism is defined by the set of activities of a person traveling to a place outside his or her usual environment for at least one night, but less than a year, and whose main purpose of travel is other than the exercise of an activity remunerated from within the place visited". The phrase "usual environment" excludes trips within the person's community of residence and routine community trips. The phrase "exercise of an activity remunerated from within the place visited" excludes migration from temporary work paid by an economic agent resident in place visited. This however does not apply to business related travel such as sales calls, installation of equipment, or conventions where the traveler employer is located elsewhere than the place visited.

## **2.2 IMPORTANT STRATEGIC TOURISM DESTINATIONS AND ECONOMIC IMPACT.**

Strategic important tourism destinations and attractions are often referred to as "mega", "flagship", "iconic", or "hallmark" events and attractions, according to a wide range of literature published by government, private sector, and academia worldwide. This section explores key literature that defines or provides methodological approaches for identifying strategic important tourism destinations and attractions.

Weidenfeld, 2010 , acknowledges that there is no strict dichotomy between them, and major attractions could have both high and low levels of "iconicity" and "flagshipness", and these may be lost or gained over time, depending on factors such as the quality of the tourism product, over-crowding, quality deterioration, and new competitors.", he defines a flagship attraction as one whose appeal can be "attributed to distinct qualities, including uniqueness, location, international reputation, and outstanding media attention, making it a 'must-see' attraction and relatively large in size he also defines an iconic attraction as one whose image is constructed by "elements of authenticity and mental perceptions...which serve as universally recognized symbols or representation of their location or culture/heritage and evoke a powerful positive image among both tourists and local residents'.

Mega events are “global in their orientation and require a competitive bid to win them as a one-time event for a particular place.” while hallmark events as "major one-time or recurring events of limited duration, developed primarily to enhance the awareness appeal and profitability of a tourism destination or describing an event that possesses such significance in terms of tradition, attractiveness, quality or publicity that the event provides the host venue, community or destination with a competitive advantage." . Getz, (2008).

Preuss, (2007), identifies six types of event-structures preserved by mega-events and examines changes in these using a bottom-up approach for measuring event legacy:

- Knowledge (i.e., organizational, security, technological);
- Networks (i.e., political, sport federations, security);
- Cultural goods (i.e., cultural identity, cultural ideas, common memory);
- Primary infrastructure (i.e., sport infrastructure, training sites);
- Secondary structure (i.e., villages for athletes, technical officials and media);

- Tertiary structure (i.e., Security, power plants, telecommunication networks, cultural attractions). Emotions; and Image.

Sharply, (2007), identifies the following key success factors for flagship or mega-attractions to provide the growth and stability necessary for sustaining a rural development:

"The nature of the attraction is fundamental to long term success; it should have the potential to offer a variety of experiences to meet the needs of a broad visitor base and be attractive and have a marketable storyline"; "A flagship location should be developed in a location where it can contribute to a critical mass of attractions"; "The attraction should be developed within existing resource capability, whether in terms of tourist facilities and opportunities for local business development or the physical environment." "There is a need for integrated planning and development." and "The potential for developing a regional tourism experience should be exploited and promoted at the regional level."

Roche, (1994), defines mega-events as "short-term events with long-term consequences for the cities that stage them." Also discusses long-term positive consequences (i.e., tourism, industrial relocation, and inward investments) and long-term negative impacts (i.e., debt) of hosting a mega-event.

Hall, (1989), defines hallmark events as "major one-time or recurring events of limited duration, developed primarily to enhance the awareness, appeal and profitability of a tourism destination in the short and/or long term. Such events rely for the success on uniqueness, status or timely significance to create interest and attract attention."

Marris, (1987), suggests that mega-events can be defined by volume, value, or psychological impact, or some suitable combination of these factors. Also discusses potential motives (i.e., harmony and progress, prestige, etc.), potential impacts (i.e., tourism, economics,

technical, physical, social, cultural, psychological, and political), and measurement of impacts (i.e., attitude surveys, cost/benefit and multiplier techniques).

Crouch, (2011) develop an insight into the importance and impact of attributes which affect the competitiveness of tourism destinations. Using a general conceptual model of destination competitiveness, 36 competitiveness attributes were evaluated by "expert" judgment in the form of an online survey of destination managers and tourism researchers. These judgments were integrated and analyzed using the analytic hierarchy process (AHP). In addition to estimating the importance of the attributes of competitiveness, the results of the AHP were further analyzed to produce measures of attribute determinance. These measures were then tested statistically to identify which attributes were judged to exert the greatest determinant impact on destination competitiveness. Ten of the 36 attributes were found to have determinance measures statistically significantly greater than average.

As the application of human icons as tourist attractions continues to increase, there is a growing need to better understand how these famous individuals are used by destinations. Based on literature in several relevant fields, such as history, social science, and destination management, effectiveness criteria for icon attractions were analyzed in a study. Three "situational" factors influencing the operation of icon attractions (culture, history, and government involvement) were included in these criteria. It also suggested that icon attractions can be evaluated from three aspects: characteristics of icons, organization, and impacts. The applications of icon effectiveness criteria for tourist attractions in the United States and China were compared. The validity and practical value of the effectiveness criteria were demonstrated. Management implications in the utilization of icon attractions were derived." (Tang, etal, 2009).

This literature provides a discussion of tourist icons as pull factors of a destination and problems associated with icons. According to interviews held with major wholesalers in

Australia and inbound tour operators in New Zealand, tourist icons vary in importance to different segments of the market, with coach tourists placing more importance on icons than free independent travelers. Moreover, the need to base overseas marketing on icons depends on the maturity of the targeted market. A tourist survey in New Zealand revealed that Milford Sound and Rotorua were indeed the most commonly known attractions, but that in addition to these two key icons, tourists were attracted to natural features in general, such as mountains and glaciers."This Literature argues that an overemphasis on tourist icons potentially leads to unsustainable tourism development, for the following reasons tourists travel large distances to visit the spatially very dispersed tourist icons, and this results in considerable amounts of greenhouse gas emissions, even if they visit New Zealand for a short period of time; the high visitation levels at popular sites result in infrastructural bottlenecks, reaching carrying capacity, which results in potentially significant environmental and social impacts; and the uneven geographical distribution of tourism spending is a missed opportunity for much-needed regional development. The current '100% pure' campaign by Tourism New Zealand potentially contributes to a more holistic promotion of New Zealand as an attractive 'natural landscape' destination."(Becken, 2005).

"This literature argues that tourism planning has as its central challenge in the design of effective touristic experiences, and can find conceptual sources for this task in iconography, the field that studies the meanings of images. In search of iconographic principles for tourism design, the article investigates Niagara Falls, still one of the foremost attractions in North America. At Niagara Falls, the article identifies two main compositional elements: staging, which situates a desirable motif (in this case a waterfall) in a stage setting; and thematizing, which links the motif to concepts (like terror or romance) that make it evocative."(Sternberg, 1997).

Empirical analysis shows that "tourism has a positive impact on economic growth and entrepreneurship; prices and income also have significant effects on tourism."Suggests that "it is possible to design an adequate economic policy [(one that improves entrepreneurship, reduces prices and increases income)] that stimulates tourism activity and has a resultant positive indirect effect on economic growth. (Nissan, etal 2010).

A study identifies three characteristics for maximizing the economic benefit of a major tourism project: "high quality, distinctiveness, and that have the space to expand to accommodate additional infrastructure development."Describes both "creative and 'consumptive' experiences" as key factors making a destination attractive to visitors that can stimulate repeat visitation. . (Lord Cultural Resources, 2009).

A study also identifies two methods of assessing tourism economic impacts:

Demand Perspective Impact Analysis or Contingent Value Method (i.e., surveys potential visitors to assess the value they place on gaining access to a tourism attraction or destination); and Supply Perspective Impact Analysis (i.e., uses input-output multipliers to transform tourism expenditure data into economic impacts and spin-off effects).Identifies cultural activities as a key driver for economic growth, regardless of the current level of economic development. (Grefe, 2009).

"Festivals are often part of the economic development strategy of rural areas. This study estimates the economic impacts of visitor expenditures at two Scottish festivals in rural North Carolina, using tourist survey data and an input-output model. While local restaurants and lodging and festival vendors and sponsors benefit from substantial visitor expenditures, the multipliers are relatively small, and hence the total economic impact of the festivals represents only a small percentage of economic activity in the two regions considered. Lodging expenditures have the greatest impact on the region with a multiple-day festival, while



expenditures on food and beverage have the greatest impact on the region with a single-day festival. The magnitude of the economic impact depends on characteristics of both the festival (number of days) and the local economy (other attractions and linkages)." (Chhabra, 2003).

"Although tourist attractions are fundamental to the very existence of tourism, there have been few attempts to come to terms with the breadth of approaches that have been employed in their study. An examination of research methods used in the study of tourist attractions and the tourist attractiveness of places reveals that most studies can be classified into one or more of three general perspectives: the ideographic listing, the organization, and the tourist cognition of attractions. Each of these perspectives shares a distinct set of questions concerning the nature of the attractions, as expressed through the typologies used in their evaluation. At the same time, all three perspectives make comparisons based on the historical, locational, and various valuational aspects of attractions. This framework can be applied in the comparison and evaluation of tourist attraction related research." (Lew, 1987).

In the cases where the majority of literature on a subject shared common themes and conclusions, I was able to confirm the following: That strategic significant tourism destinations and attractions exist as a key sub-sector of tourism and that they have distinguishing characteristics that set them apart from other forms of tourism. That they can stimulate economic growth and this growth can be measured. Investments in these types of tourism can lead to positive economic and social benefits. That they can contribute to both a country or region's tourism brand as well as its overall image, that they can help repeat visitation to the same areas or other areas of the host region or country.

Common themes found in the literature also supported the following inferences that are external to the specifics five areas of inquiry: The quality and type of pre-planning and the involvement of communities of interest have a measurable effect on positive outcomes for

destinations and attractions. That negative impacts are possible, but can be mitigated with appropriate planning. That a significantly important tourism attraction or event can be international, national or regional in scope, and has the potential to provide benefits and opportunity commensurate with its scale. However, the literature did not provide clear evidence to determine: A generally-accepted term used universally to describe strategic important tourism destinations and attractions, definitive formula or algorithm to suggest that X investment in a strategically important destination or attraction would lead to Y in economic outcome.

### **2.3 DESTINATION COMPETATIVENESS MODEL**

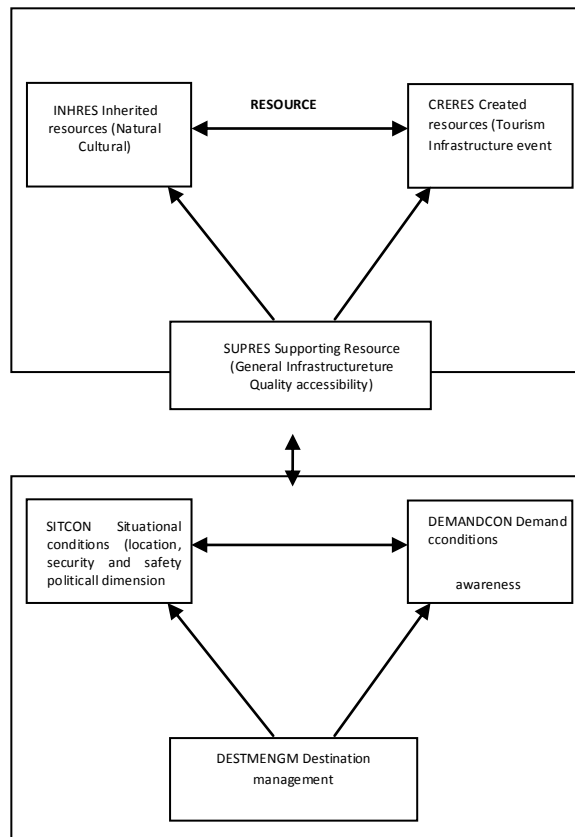
The destination competitiveness tourism model have become the synthesis of ideas, which relates to the interactions and behaviors of different types of industries, which operates in any given environment or destination and the socio-economic impact it generate in that area (Hassan 2000). However, several authors have provided some inputs into understanding destination and potential research of competitiveness of tourism model in the area of tourism destinations. Faulkner (2000). Considered the environmental component in his illustration of the destination of competitiveness tourism. Tourism model in his study of hot spring hotel in Taiwan. He reiterated destination commitment to the environment, comparative advantage; industries structure and demand factors are as the four determinant of tourism competitiveness. The model is based on the following assumption:

1. Supply of supporting factors or component in any tourism destination increases demand and attractiveness of the environment
2. Influx of people in any given destination is a function of attractiveness and individual disposable income

3. Every destination has its own competitiveness advantage over one another
4. Tourist tend to cluster where high level facilities are allocated
5. Demand situation support tourism competitiveness and thus positively influence the development of added value in tourism
6. Complimentary activities in tourism industry increases visitor's satisfaction.

De Keyser and Van hove (1994) argued that the analysis of a competitive position should take six groups of competitive factors into account which include tourism policy, macroeconomic supply, accommodation, and transport and demand factors. Crouch & Ritchie (1999), presented the most recently improve version of their competitiveness model, a conceptual model of destination competitions. According to their analysis, there are four key determinants that makes destination attractive which includes destination policy, core resources, attractors and supporting factors.

Fig11: Destination Competitiveness Tourism Model.



Source: Adapted from Dwyer (2004).

They went further to explain that inherited resources (INHRES), created resources (CRERE) and supporting resources (SUPRES) encompass the various characteristics of a destination that makes it attractive to visit. Destination management (DESMNGM) covers factors that enhance the attractiveness of the inherited and created resources, strengthened the quality of the supporting factors and those, which best adapt to the situational condition.

(Crouch and Ritchie, 1999). The category includes the activities of destination management organization, destination marketing management, destination policy, planning development, human resource development, and environmental management. Those (DEMANDCOM) comprise the three main elements of tourism demand awareness, perception and preferences (Johnson 2001) . The factors of situational conditions (SITCON) can moderate, modify or even

mitigate destinations competitiveness. There would seem to be many types of such factors, example destination locations, micro and macro environment, security and safety and price competitiveness (Johnson 2001). Baloglu (1999) examining the attribute of a destination showed that destination attachment would influence tourist in the process of chosen a destination, the subsequent evaluation of the trips and in their future intentions , he further stresses that destination image exercise a positive influence on perceived quality and satisfaction. KIM and Dwyer (1989) widely acknowledge that destination attractiveness affects tourist subjective behavior perception, consequent behavior, and destination choice. Tourist behavior is expected to be partly conditioned by the image that they have of destinations. Middleton and Clerk (2001) highlighted the inter-dependence- sub- sector inter-linkage of tourism products. Tourist experience is a medley of services such as hotels, restaurants, shops, attractions among others and they may evaluate each service element separately. Satisfaction with various components of destination leads to overall satisfaction (Kozak & Rimmington, 2000) However, the destination competitiveness model would help to evaluate the development of tourism potential and attractiveness in Kaduna state.

## **2.4 CRITERIA FOR IDENTIFYING TOURISM POTENTIALS**

The term “tourism potential” is widely used in the tourism literature but attempts for its precise scientific definition are scarce. Generally, tourism potential can be defined as the ability of an area (territory) to form a complete tourism product (“a complex of material and nonmaterial elements to provide satisfaction of needs and benefits to the tourist, offered for consumption” – Krippendorf, 1980) and develop an economically vital tourism. It is not necessary for this ability to be displayed or realized at the present moment but it must exist, according to the knowledge of contemporaneous tourism.

This ability depends on many factors. Above all, a territory must be attractive, it must interest potential visitors. This has to do, above all, with tourist resources (or resource potential), which are defined as the original (basic) sites and phenomena that attract tourist flows to a given destination. Through the resources a psycho-physical regeneration and enhancement of the erudition of tourists – directly or indirectly, is implemented, through the services offered at their basis.

The resources alone, however, are not enough to prove that a territory has tourism potential or the ability of forming a tourism product. A tourist must be able to reach it comparatively easy (i.e. the position and accessibility of the territory are elements of the potential) and to get at least elementary services needed for his staying (which requires servicing installations such as food and accommodation facilities etc.). The functioning of such facilities requires the existence of adequate infrastructure, workforce etc. These factors are reflected as a whole in the definition of Gunn (1988) as “areas with tourism development potential” (“destination zones”), which are expected to have attractions (things to see and do), local communities (settlements) to provide services, goods, facilities and attractions, as well as transportation to secure the access to the area and in it.

As was noted already, it is not necessary for all elements to be available to say that a territory has tourism potential. It is important that the tourism potential be available the development of the rest of the elements of service be possible.

Bearing in mind the aims and the expected results of the present study it is important to state that practically every territory has certain tourism potential (for example, the “industrial” and “military” tourism). Practically every site or phenomenon can be a tourism resource in a specific situation. This is because there are many different types of tourism and each one of them is based on different resources or attractions, i.e. different territories have different

potential for different types of tourism. Besides, this peculiarity is due to the heterogeneous tourism demand – different segments of the tourism market look for different conditions and attractions which also affect the tourism potential of the territory. It is necessary to stress the fact that not all areas can develop economically vital tourism, i.e. tourism that considerable economic, social and other benefits and justify the investments needed and the succeeding expenses, (Gunn, 1997)

Having in mind these conceptions of the nature of the tourism potential, the following definition for the places (areas) having such potential can be given. It outlines the criteria and to a great extent determines the steps in identifying these areas with tourism potentials.

The places having tourism potential must:

- Have tourism resources (attractions) allowing the attraction of considerable amounts of tourist flows, securing a short term or medium term economically effective development of tourism;
- Be situated relatively close to important centers of forming and distributing tourism demand.

Tourism potential can be viewed conventionally as primary (resource) or potential in the narrow meaning of the word, and secondary, or potential in the broad meaning of the word – including the position and accessibility of the territory, the availability of ecological problems, the contemporary level of development and cultivation etc.(Toyeb,2000).

## **2.5 CLASSIFICATION OF TOURISM POTENTIALS**

### **2.5.1 Typology of potentials**

#### Definition of Potential

The determination of what is tourism potential is a central question that must be answered

Before model development can occur. It is not an easy concept to define because tourism potential, like the industry itself, is quite subjective and open to personal preferences. Site-based potential was derived from the digital data itself, the Integrated Resource Management data in particular; the potential to draw tourists can be directly linked to natural resources such as scenic beauty that an area offers. The potential model was meant to integrate or mesh with the existing Integrate Resource Management land classification system of the Nova Scotia Department of Natural Resources. The “Integrated resource management (IRM) is a planning and decision making process that coordinates resource use so that the long term sustainable benefits are optimized and conflicts among users are minimized, (National Resource agency, 2010). IRM brings together all resource groups rather than each working in isolation to balance the economic, environmental, and social requirements of society. IRM includes planning for minerals, forests, recreation, wilderness, energy, wildlife, and parks.” The important question to consider in defining tourism potential is : “do the natural resources of the study area provide the necessary elements required for the preferred tourist activity.

Tourists are more likely to visit destinations that possess a wide variety of interesting facilities and services which they can enjoy. We can often find different kinds of potentials in a destination providing visitors with different types of experience. Some of these potentials are natural while the others are man-made. They can be broadly divided into four main types:

- Natural features



- Man-made buildings, structures and sites that were originally designed for a purpose other than attracting visitors
- Man-made buildings, structures and sites those are purposely-built to attract visitors and cater for their needs
- Special events

Examples of each type of attractions are presented in Table 2.1.

**Table 2.1 - The four categories of potentials**

<b>Natural features</b>	<b>Man-made, but not originally designed to attract visitors</b>	<b>Man-made and purpose-built to attract visitors</b>	<b>Special events</b>
<ul style="list-style-type: none"> <li>• Beaches</li> <li>• Caves</li> <li>• Forests</li> <li>• Harbours</li> <li>• Mountains</li> <li>• Natural heritage sites</li> <li>• Rivers and lakes</li> <li>• Rock faces</li> <li>• Wildlife – flora and fauna</li> </ul>	<ul style="list-style-type: none"> <li>• Archaeological sites and ancient monuments</li> <li>• Cathedrals, churches and temples</li> <li>• Cultural heritage sites</li> <li>• Historic gardens</li> <li>• Industrial Archaeology sites</li> <li>• Stately homes and historic houses</li> <li>• Steam railways</li> <li>• Reservoirs</li> </ul>	<ul style="list-style-type: none"> <li>• Amusement parks</li> <li>• Art galleries</li> <li>• Casinos</li> <li>• Country parks</li> <li>• Craft centre's</li> <li>• Educational institutions</li> <li>• Exhibition centre's</li> <li>• Factory outlets</li> <li>• Garden centre's</li> <li>• Health spas</li> <li>• Heritage centre's</li> <li>• Leisure centre's</li> <li>• Marinas</li> <li>• Museums</li> <li>• Picnic grounds</li> <li>• Safari parks</li> <li>• Theme parks</li> <li>• Waterfront developments</li> <li>• Working farms open to the public</li> </ul>	<ul style="list-style-type: none"> <li>• Arts festivals</li> <li>• Fairs and expositions</li> <li>• Historical Anniversaries</li> <li>• Markets</li> <li>• Religious festivals and events</li> <li>• Sporting events – watching and participating</li> <li>• Traditional customs and folklore events</li> </ul>

Source: Adapted from Swarbrooke, J, (2005)

## **1. Natural features**

Physical features and natural scenery, collectively termed “landscapes”, are major potentials for tourists who love nature. With the growing concern about conservation, environmental protection, landforms, natural vegetation and wildlife, natural features provide valuable resources for the development of nature-based travel and/or eco-tourism. A landscape will be typically composed of three major geographical elements:

- The landform and geology
- The natural vegetation (flora) and the animals (fauna) which depend upon it
- The presence of man which may modify both landforms and vegetation

Landforms are classified into seven main categories:

- Hills            • Mountains            • Plains            • Plateaus            • Coastlines
- The water systems which drain the various landforms
- Geological determinants of landforms such as rivers, oceans and volcanic activity

## **2. Man-made attractions that were not originally designed to attract visitors**

Potentials that were built to serve purposes other than attracting visitors may either be deliberately converted into an attraction or have spontaneously evolved into an attraction over time. Some of the commonly visited potentials are:

- Ancient monuments and historic buildings            • Gardens
- Archaeological sites            • Cathedrals and temples
- Cultural heritage sites            • Industrial heritage

### **3. Man-made attractions purpose-built to attract visitors**

The aim of purpose-built attractions is to attract visitors and increase visitor numbers. Satisfying visitors' needs is essential in the daily operations of these attractions. You can usually find the following types of attractions included in a tour itinerary:

- Amusement and theme parks
- Zoos and aquariums
- Museums and art galleries
- Retail shops

### **4. Special events**

Festivals and events are one of the fastest-growing segments in tourism. Events are temporary attractions which provide opportunity for leisure, social or cultural experiences outside the normal range of daily activities. Destinations compete vigorously for mega events such as the Olympic Games and the Soccer World Cup.

These special events may generate economic benefits for the community including job opportunities and foreign exchange income. They can also add variety to the attraction profile and enhance the image of a destination.

There are three basic types: sports events, arts and culture, and commercial events

## **2.6 TECHNIQUE'S FOR ASSESSING TOURISM POTENTIALS**

„Tourism Potential“ is a widely used and accepted term in tourism domain, however, it sometimes create misunderstanding as potential expresses some territorial capabilities, which holds a little narrower domain. As prescribed by S. Formica the term „potential“ may be replaced by „Attractiveness“ which clearly indicates the relations between demand and supply of tourism. However, several other researches follow the term „Potential“ though this may be assumed to be synonymous to „Attractiveness“. In Kaduna state, the available potentials were

not enhanced; the few that are enhanced are not organized and are under-utilized. Copper et.al, (2008) had proven that tourism can generate a lot of benefits to the destination area if it is given proper considerations needed.

Tourism research has demonstrated that the capacities of the existing potentials to attract tourists are necessary in the understanding of the elements that encourage people to travel. Achieving the goal of measuring potential requires the understanding of its components and their relationships. There are two ways of assessing potentials given by Edward and George (2008):

(1) By studying the potentials

(2) By exploring the perceptions of those who are attracted by them.

This study established its findings using the first ways as given above i.e. by studying the potentials. Previous studies done on tourism potentials of a certain territory focused on studying the potential such as inventory taking, grouping or summing up indices representing resources, infrastructures or even services (Muazu, 2010, Evans and Chon, 1989; Go and Zhang, 1997, O'Neill et al., 2002) than assessing their significance or individual driving force (pull). Tourism literature provides only a limited number of studies addressing destination potentials. And those studies focused exclusively on the measurement or grouping aspect of the potentials and ignored the assessment of its components.

To evaluate individual potentials in a destination, an appropriate tool is necessary so as to have a proper assessment. Spatial analysis using GIS was conducted in Bourges district at India by Ivan tehohvav, 2011, to identify places with tourism potentials outlining the zones with possible tourism development according to each of the chosen criteria, i.e., presence of resource, settlement around resource sites to generate demand, this technique does not apply to

this study, due, to the fact that the state government has already identify it's potentials,(Kaduna state tourism paper December 2004)

Adeyemi, 2012, applied important-performance analysis technique (IPA) as a descriptive tool to analyzed Zaria as a tourist destination. The IPA technique allows simultaneous comparison of direct performance measure of service quality to the importance rating given by customer's for the various quality items being evaluated, this study rated service quality given to customers not the potentials that is the reason why it cannot be adopted in this present study. SWOT analysis can also be an efficient tool in assessing potentials where authentic tourist data can be obtained, which cannot be applied in this study due to absence of authentic tourist data in Kaduna state.

Due to these inadequacies in the above named tools this study adopted a workable methodology to quantify tourism potentials through user-friendly and easy to handle tool. During formulation of various steps, it has been observed that most of the tourist sites in Kaduna state lack authentic tourism data, hence, for achieving an optimized solution in this regard, the technique applied in this research is based on weighted sum model, a popular multi-criteria decision making tool which incorporates ranking and scaling technique's for quantifying various attributes. This method selects social, physical and environmental attributes and quantifies them through ranking and scaling techniques.

## **2.7 TOURISM DEVELOPMENT POTENTIALS BASE IN KADUNA STATE**

### **2.7.1 Emirs of Zauzau palace**

The old palace in Zaria from which queen amina ruled Zazzau in the 16<sup>th</sup> century has become one of the most important tourist sites in the state. Still serving the same purpose following the coming of the Emirate system in northern Nigeria following the 1804 Jihad of usman danfodio. Though the palace has expanded from what it was, but still houses the relics of the old palace, living the quarters of the legendary queen amina at the beginning of her reign. The palace consists of four council chambers named after former Emir's. There is a large living area of guards and serfs and office for the administrative purposes. The extensive use of the habe (former Hausa rulers) architectural designs were use taking into consideration the safety and security of the area. This explains the thickness of the walls, the wood and locally constructed concrete roofs so thick as to withstand any form of attack, inside the palace reveals the architectural ingenuity of the people, each of the rooms is inter-connected to one another, and with intricate drawings and exquisite paintings that give's the palace it's splendor. Despite the warm climate of Zaria in most period of the year, the interior of the palace maintains it's room temperature, owing to the walls that insulates the building from sun's heat. It is simply irresistible to witness myth, folklore and this history project, the sheer grandeur of beauty and elegance of the traditional hausa-fulani culture in Zaria city which houses the palace and it's adjoining communities, from the intoned chants of quaranic pupils and the earnest ups of diverse praise singers at the entrance of the palace, to the more refined art of royal barbs who are always in their colorful costume ushering in visitors to the palace, one is at home with nature and beauty of human imagination which is on display at the palace of Emir's of Zazzau.



**Plate 1: Showing the Emir's of Zazzau palace. Source: Field Study, (2010)**

### **2.7.2 Nok culture**

The Nok culture which dates back over 2,500 years is no doubt one of the greatest and best known cultures in the world. Although it was bernart fagg an archeologist who originally began the collection of Nok terracotta heads discovered by tin miners in 1943 at Nok site, when carbon-dated, these master pieces made of clay were discovered to have been created around 500BC. Many new findings however indicate that some of the works can be dated much earlier than this. What makes Nok terracotta enigmatic is because of the fact that the three hollows represents eyes and mouth without ear's which continue to dumbfound curators all over the world, at the entrance of the village are artworks depicting the creativity of a culture beyond human imagination.





**Plate 2: Nok village Jaba L.G.A, Kaduna state. Source: Field Study. (2010).**

### **2.7.3 Bernart faggs House**

Bernard fagg the curator of the Nok terracotta had had a beautiful cottage on top of the Nok rock. The multi- purpose family house build on stone, mud, wood and iron roofing has a stone fountain supported by cemented floor, its components are: a living room, kitchen, bathroom and a relation balcony. The whole structure is painted white and has little French windows, a nearby out house serve as a toilet while a stream at the foot of the rock on which the house stands provide fresh water for the family. Till date the house remains strong and beautiful through time, though no longer in use, the house is maintained as historical monument for tourism by the present curator of Nok antiquity.



**Plate 3: Bernard Fagg house at Nok village in Jaba L.G.A. Source: Field Survey, (2010).**

#### **2.7.4 Kagoro hill**

The Kagoro Hills scenery is one of the most beautiful natural attractions in Kaduna State. The hills influence the weather of the area and the area enjoys a nice climate similar to that of Jos Plateau. There is heavy rainfall with mild fresh humid wind during the rainy season. The hills also form a long range, with tall trees and rocky places at the base. The area is good for rock climbing, hunting, mountaineering and has very beautiful sceneries for picnics and general relaxation.



**Plate 4: Kagoro hill in Kaura L.G.A and life on top of the hill. Source: Field Survey, (2010).**

In the past, life on the Kagoro hill according to the natives is so complete that the inhabitants needed not leave this protective enclave. With abundant fresh water from the rocks, the luxurious greenish all year vegetation, unbelievable fertile land and plains on top the hill and its suitability for livestock farming, Kagoro hill are a marvel to behold. Today, however modern conveniences, goods and services have led to massive relocation to the foot of the hill, the sights of rural Kagoro hill women and children trampling along the cliffs on nimble feet laden with bundles of firewood and purchases from nearby local market is commonplace on the trail.

Traditional religious belief is still extensively practiced; while the extended family system made up of clusters of related family, compounds adorn the top of the hill settlements. On the first day of January every year, the people of Kagoro those living below and on top of the hill celebrate the Afan (hunting) festival which usually attracts numerous visitors from all parts of the world, who converge at the foot of the Kagoro to witness this annual celebration of bravery.

To ensure the development of the Kagoro hill, the Kaduna State government has undertaken to convert the hilltop into a tourist paradise and a resort offering a golf course, air strip, other sports and relaxation spots that will be the first of its kind in Africa.

#### **2.7.5 Kangimi dam**

The dam which is about 37 km from Kaduna town is situated along Kaduna - Jos road, the area is an attractive place for tourists and is good for picnics and general relaxation. Presently, the area has been earmarked by the Nigerian Tourism Board to build a holiday Resort Near the dam. The Dam was originally known as the Baban Rafi River. It was dammed by Kaduna State Government for the purpose of water supply and irrigation activities in the State. The distance from one bank of the dam across the other is about 9 kilometers. One of the banks however is an artificial embankment built of sand and stone to create depth and pressure to facilitate speedy movement of the water. At the centre, a sluice gate ensures that the volume of water is regulated. When the tide rises up the bank, the valves of the gate are opened to discharge excess water. They are turned off when a desirable volume is attained. A channel directs the escaping rushing water into the towns. This flow is directed by turbines and the resulting surf and waves produced by the rush is delightful to watch. To further develop the area around the dam, the Kaduna State government has commenced a project that will link the area

together with the adjoining Fifth Chucker recreation park, in other to add a resort and water sports facility to the complex.



**Plate 5:** Kangimi Dam at Igabi local Government Area in Kaduna state. Source: Field Study, (2010).

#### **2.7.6, Martriga water fall**

Matsirga Waterfalls is situated in Kafanchan, about 227 kilometers south of Kaduna. The water drops 30 meters into a gorge that has been supported by the beautiful rocks. The fresh cool breeze around the area has something to offer for tourists. The proximity of the Kagoro Hills and Nok Museum provides an added advantage to tourists visiting the area.

The water of this magnificent fall have their source from springs on the Kagoro hills cascading from four different natural funnels off the sheer rock cliff from about 25 metres to form a large pool at the bottom. At the point of impact with the river, the cascading showers of the fall create a rainbow-like mist which appears and disappears mysteriously. The river formed by the fall increases with the rainy season overflowing its banks. A natural rock shelter at the

river bank forms a cover and a resting place for picnicking. Like a half umbrella, it provides shed for tourists amidst the wondrous continuous water fall. A heritage resort known as Madakiya Heritage Resort is being developed by a private investor within the fall area to serve the relaxation needs of tourists and visitors.



Plate 6: Matriga Water Falls Zango Kataf L.G.A, Situated at Kafanchan. Source: Field Study, (2011).

### **2.6.7, General Hassan Usman Park**

General Hassan Park established in 1954 as the colonial government garden serving the relaxation needs of civil servants and the West African Frontier Force of the colonial era was turned into a major tourist location by the Kaduna State government in 1998. Situated at the end of swimming pool road, Kabala east, Kaduna. The entrance point to the park is about 273 meters from Kofar Gamji, (Kaduna state Tourist guide, 2008). The park occupies an area of about 7000 sq. meters. It has a natural setting of trees, mango groove, Orchard and dotted small islands from river Kaduna which flows majestically behind it. The beauty of the landscape with assorted fine flowers and palm trees is further enhanced by a mixture of modern and traditional architectural designs and sculptures. The facilities found within the park include a multi-purpose theatre containing a permanent exhibition ground, art studio and gallery, a children's

amusement park, a mini zoological garden of marooned ostriches, a crocodile pond and ancient tortoise. The park is bordered by the Kaduna River for which the State government plans to develop for water sports purposes. Other attractions include an enclosed Olympic size swimming pool and an arena used for training of officers of the Nigerian Defense Academy, beautifully landscaped lawns used for social activities such as weddings and for all night parties



Plate 7: Hassan Usman Park Situated at Kabala East, Kaduna North L.G.A. Source: Field Study, (2010).

### **2.7.8, Trappco Ranch and Resort**

Located about 24km from Kaduna town and adjacent the local airport is a ranch/resort tourist centre that contains every conceivable facility needed for a standard hospitality centre. It is broadly divided into three major sections; the hospitality, agriculture and tourism/sports sections. These are further divided into sub-sections including ; food and beverages, horse riding, poultry, pilot farming, quad bike riding, polo, golf, volley ball, football, and basket ball. Participants attend the game from all over the country. The physical facilities on Trappco Ranch include a swimming pool, bar and restaurant, picnic gardens, an artificial lake for boat rides, horse stable, children's playground, a shopping centre, accommodation, craft centre set up by

Kaduna state ministry of culture and tourism, named the culture window, as well as conference hall for seminars.

The accommodation is designed in detached single brick bungalow apartments with thatched roofing to give individual or groups who are guest a feeling of being in touch with nature. There is a spacious studio room that contains bathroom and kitchen facilities with cane chairs, wooden furniture and bed made of local craft with a terrazzo floor that expresses the traditional ingenuity of the setting, which is a part of the uniqueness of this resort.



Plate 8: Trappco Ranch and Resort, Igabi L.G.A. Source: Field Survey. (2010)

### **2.7.9 Fifth Chucker**

This is a private initiative of the 5<sup>th</sup> Chucker Group who are also in-charge of its development. This major tourist attraction centre, is specially designed for Polo games and for horse racing. Other facilities existing in this beautiful resort include, a horse paddock, children's play ground, a bar catering for the entertainment needs of visitors and tourists particularly during the international Polo tournament held twice a year usually in January, May or December. These tournaments attract players from all parts of the world (Kaduna State Tourist guide 2008).

The most exciting part of the 5<sup>th</sup> Chucker is its location and layout with pathways lined with colorful floral patterns and of a gym for various sporting activities. Recently, the sites is experiencing further development by linking it to the adjoining Kangimi Dam to provide tourists a place of relaxation and opportunity to bask in the natural setting that makes the 5<sup>th</sup> Chucker one of the tourist wonders of the State.



**Plate 9:** Showing Horses at Fifth Chucker, Igabi L.G.A. Source: Field Survey, (2010).

## **2.8 STATUS OF TOURISM PROJECTS AT POTENTIAL SITES IN KADUNA STATE.**

Kaduna state Government especially with the advent of the present administration has understood the importance of tourism sector, in line with the National Tourism Development Master Plan proposals, that partnering with the private sector is crucial to realizing its dreams in tourism development in the state. Towards this end, the state has identified some major projects that she hopes, when completed, would launch her into a major tourism destination of the country, and Government has already committed substantial amount of resources towards the take off of some of the projects.



### 2.8.1 THE KANGIMI RESORT

This project is a typical Public-Private sector partnership. Kaduna state Government is partnering with Fifth Chucker Polo and country Club to produce a first class facility that will cater for the needs of both local and international visitors. The major components of the project include horses and horse riding, the village, the marina, Children's paradise, Golf and Golf estate, Adventure Activities, Culture, Wildlife and local industries. Each component has the following details: pa and health

- a. **Horses:** Polo, racing, dressage, show jumping, auctions, breeding.
- b. **The tourist village:** Hotel, meeting, food and beverages, spa and health centre.
- c. **The Marina:** boating, Water sports, fishing, food and beverages, residential
- d. **Children's Paradise:** play ground, climbing rail and frames, slides, crawl tubes, trampolines, sand pits etc.
- e. **Golf and Golf Gate:** Golf course, driving range, residential.
- f. **Adventure activities:** Mountaineering, quad bikes, hang gliding, team building, etc.
- g. **Culture:** Arts, dance and theatre.
- h. **Wildlife:** Conservation of endangered species. Game breeding, game viewing, hunting.
- i. **Local industries:** Pottery, candle making, blacksmith, saddler, clothing.

The project is estimated to cost \$450,000,000 out of which Kaduna state Government is to provide 10% in form of equity funding (the partnership). So far, Kaduna state government is committed towards ensuring that it fulfils its own part of the obligation so that the project, (Kaduna State Tourism Report 2011) which has already started, does not stop. Presently, phases 1&2 which comprise of master plan development and pre-construction are almost completed. At the inception of this administration, the partnership was at its infancy, but so far the Government has made substantial financial commitment to the project.

### **2.8.2. THE KAGORO HILLS HOLIDAY RESORT**

This is a giant project embarked upon by the Kaduna state Government with substantial funding envisaged from a Japanese official Assistance.

An international holiday resort is to be constructed on top the famous Kagoro hills in Kagoro, Kaura local Government area of Kaduna state. The hills are high grassland plateau averaging 12,800ft with a peak of over 13,500ft. A total of about 110 hectares of land has already been acquired for the proposed project.

Kaduna state Government has already started committing substantial funds towards the proper take off of the project. To this end the land for the project has been acquired, compensation for the inhabitants is about to be paid and field, perimeter and topographical surveys have been completed. Last year the state government commissioned consultants to commence work on the project so far they have completed the stage 1 of their job. With its beautiful scenery, good weather and breadth-taking landscapes, this project stand to be about the best in Nigeria when completed. The following facilities are proposed for the project:

1. A Road up the hills
2. An airstrip.
3. A presidential lodge.
4. V.I.P. lodges.
5. Chalets.
6. Conference halls.
7. Royal studios.

8. Restaurants, Bars, Coffee shops etc

9. Swimming pools

10. A mini zoo.

11. A befitting five star hotel.

12. Cable car.

The total cost of the project is estimated to be about #1.9 billion (\$15M). Most of the funds is expected to come from a Japanese funding Agency. However Kaduna state Government is yet to complete all the preliminary works before the Japanese agency is expected to come in. KDSG, (2011), Ministry of culture and tourism.

### **2.8.3. THE NEW KADUNA CITY.**

Kaduna state Government has realized the importance of constructing a new modern city that has all the trappings of a 21<sup>st</sup> Century City. Consequently the eastern sector of the city has been chosen to house the new millennium city. Some people have called it the Dubai of Africa.

As part of facilities in the new city a tourism enclave is being planned. The facilities in this new city will include:

1. Children and General Park.
2. Crafts Village/Cultural market
3. Five star Hotels
4. Golf and polo Courses
5. Mini Zoo
6. Gardens.

#### **2.8.4. NOK TERRACOTTA ARCHEOLOGICAL SITE**

This is the home of the famous Nok terracotta civilization situated at Nok in Jaba local Government area of the state various government and nongovernmental organizations have indicated interest in developing this site. Facilities to be provided included:

1. Research library
2. Archaeological museum
3. Craft centre
4. Craft shop
5. Open air theatre
6. Chalets
7. Offices
8. Restaurant etc.

In September 2008, His Excellency the Executive Governor of Kaduna State, Dr Ahmed Markafi, led a team of officials to attend an international Conference that extensively discussed the Nok culture in Frankfurt. He used the occasion to appeal to our German partners to help construct a research facility in the Nok area. Already, discussions are advancing in this direction and shortly construction will soon commence.

Similarly the state Government has already started construction of office blocks and chalets in Nok for visitors/researchers similarly; the federal Government is committed to constructing a museum there.

#### **2.8.5. ZARIA DAM RESORT**

This is a large dam located in Zaria about 80km, from Kaduna town. It has a serene atmosphere for relaxation and recreation. Facilities to be provided would include:

1. Boating facilities
2. Golf
3. Recreation facilities
4. Hotel accommodation
5. Film village
6. Shopping mall
7. Picnic grounds etc.

#### **2.8.6 GENERAL HASSAN USMAN KATSINA PARK**

This is a beautiful amusement park with a serene atmosphere designed for the relaxation of the general public. The river that bounds it has added greatly to its beauty. It is equipped with children amusement facilities, crocodile pond, ostriches and gardens

It is envisaged that the site across the river would be acquired to expand the park because of the influx of people especially during festive periods. Facilities there include:-

- (i) Mini zoo
- (ii) Landscaping
- (iii) Conference Hall
- (iv) Children play ground etc.

#### **2.8.7 GURARA DAM RECREATION CENTRE/HOLIDAY RESORT**

The Gurara Dam is a project of the Federal Government within Kaduna State. The project serves the purpose for portable water, irrigation and hydro power generation. This 15km stretch of water bounded all over with beautiful and breadth taking scenery is ideal for Tourism facilities. Already the State Government has commenced preliminary discussion in this regard.

This project is located in the Southern part of Kaduna State. Facilities envisaged would include the following:-

- (i) Game reserve
- (ii) Hotel Accommodation
- (iii) Recreation/ boating activities
- (iv) Mountaineering facilities
- (v) An arcade
- (vi) Shopping mall
- (vii) Film village/ studio
- (viii) Craft village.

Kaduna State is also greatly endowed with other historical sites and monuments and towering historical figures worthy of mention. These include:

**2.8.8 BAKWA TURUNKU:** The people of Zazzau emirate council who are basically Zage-Zages have one version of their origin traceable to Bakwa Turunku whose grave site is today in Turunku the HQ of Igabi Local Govt.

#### **2.8.9 QUEEN AMINA OF ZAUZAU**

Queen Amina, the famous legendary queen of Zazzau is said to be the daughter of Bakwa Turunku. It is said that she was the one that moved the HQ of Zazzau from Turunku to the present Zaria. The present name of Zaria is said to have been derived from the name of Queen Amina's younger sister called Zaria. While queen Amina was busy with various wars of expansion and conquest, her younger sister, Zaria was in charge of general administration of the Kingdom. Queen Amina was a great leader and warrior and created a fearsome niche for herself.

**2.9.0 THE RUINS OF ZARIA CITY WALLS:** To protect the HQ of her kingdom in Zaria. Queen Amina was the one who undertook the construction of the thick, high wall surrounding the administrative HQ of Zazzau. These types of wall are found all over northern Nigeria and beyond. They are generally referred to as Ganuwar Amina, meaning the walls of Amina. The walls are usually a great attraction to visitors.

**2.9.1 ST' BARTHOLOMEW ANGLICAN CHURCH WUSASA ZARIA:** St Bartholomew Church located in Wusasa Zaria is the first Church constructed in the North by the colonialists as they subjugated the area in 1904. The architectural design and materials used was basically northern and it is still maintaining that design. Today it is not only a historical monument. It is a place regularly visited by tourists.

**2.9.2 EMIR'S PALACE IN ZARIA:** The Emir's palace is the seat of power of the Zazzau Emirate Council in Zaria. Constructed around 1804, its original architectural design seems to be maintained through with slight modifications to meet modern times. Situated within the vicinity of the Emir's palace is the mosque which the Emir along with his subjects uses for his Friday prayers. Similarly, the architecture is basically traditional. Also near by is the HQ of the Zaria Local Government Council. This was originally the seat of the Native Authority of old.

**2.9.3 AREWA HOUSE:** Arewa House is situated along Ali Akilu Way, in Kaduna. It was the original residence of the late premier of the Northern region, Sir Ahmadu Bello, Sardauna Sokoto. He was killed during the 1965 coup within the premises. Today all states in the North maintain small collection of artifacts, etc that are a reflection of their states. (Kaduna State Tourism Report, 2011).

## **CHAPTER THREE**

### **METHODOLOGY**

#### **3.0 INTRODUCTION**

This chapter explains the types of data needed for the research, sources of data, mode of data collection, sampling techniques and the method of data analysis used in this research.

#### **3.1 TYPES OF DATA REQUIRED AND SOURCES**

##### **3.1.1 Data Required**

Data required from this study was collected from the following sources,

Primary data from,

- Questionnaire survey
- Reconnaice's survey
- Interview

Secondary data was obtained through;

- Review of relevant literature
- Journals, pamphlets, which will include published and unpublished materials, such as textbook projects
- Internet sources.



**Table: 3.1. TYPES OF DATA, VARIABLES, REQUIRED AND SOURCE'S**

1	Review of Literature	<ul style="list-style-type: none"> <li>• Concept of tourism</li> <li>• Important strategic tourism destinations and economic impact.</li> <li>• Techniques for assessing tourism potential</li> <li>• Destination competitiveness model</li> <li>• Criteria for identifying tourism potentials</li> <li>• Classification of tourism potentials</li> <li>• Tourism potential base</li> <li>• Status of tourism development projects in the state.</li> </ul>	Secondary sources,internet,publish/ Unpublished literatures
2	Tourist map	<ul style="list-style-type: none"> <li>• Tourism Potentials</li> </ul>	Ministry of tourism and culture.
3	Social aspects	<ul style="list-style-type: none"> <li>• Average duration of stay</li> <li>• Annual tourist influx</li> <li>• Frequency of fair's and festivals</li> </ul>	Field survey
4	Physical attributes	<ul style="list-style-type: none"> <li>• Physical accessibility/connectivity</li> <li>• Souvenirs</li> <li>• Vehicular connectivity</li> <li>• Car parking facilities</li> <li>• Accommodation</li> <li>• Tourist information and guide</li> <li>• Food and market</li> </ul>	Field survey.
5	Environmental attributes	<ul style="list-style-type: none"> <li>• Hazardous land use</li> <li>• Quality of air</li> <li>• Water pollution</li> <li>• Earth quake</li> <li>• Vulcanicity</li> </ul>	Field survey

Source: Author 2012

### 3.2 METHOD OF DATA COLLECTION

Field reconnaissance, and personal interview with management staffs of some tourist outfits, gave an estimation of experience tourist and experts as 1250, (Author 2011) which gave a sample size of 120 experienced tourists and experts.

### 3.3 Sampling Techniques

Probability and non probability sampling was employed i.e. Area sampling (Cluster), Judgmental (Purposive), Simple random sampling and systematic technique.

**Area (Cluster) Sampling;** the study area was divided into three clusters i.e. three senatorial districts namely ;( Northern senatorial zone, Central, and southern Senatorial, zone) in line with the nations democratic dispensation. As shown in (Table 3.3)

**Table, 3.3: Showing the Three Geographical Zones and Their Composition**

S/N	Senatorial Zones	Composition
1	Northern Zone	Zaria, Sabon-gari, Lere, makarfi, Kudan, Soba, Ikara and Kubau, Local government areas.
2	Central Zone	Kaduna-North, Kaduna-South, Igabi, chikun, Kajuru, Giwa and birnin-Gwari, local government area.
3	Southern zone	Jama'a, Kaura, Jaba, Kachia, Kauru, Sanga, Kagarko and Zango-Kataf local government area.

Source: Adapted from Kaduna State Tourist Guide, (2010).

- **Simple random sampling;** This technique was used to select sub clusters from the three Zones identified in the study area. A sample of four local governments was randomly selected from each Zone.
- **Judgmental (Purposive);** this sampling technique was used to interview staff of tourism outfits in the study area, in which only a set of questionnaires was administered.

### 3.3.1 Sample Size

Experts from different field's, of tourism, geography, geology, economics, history and mathematics, the sample size of the study. Four local government areas from the three senatorial zones, making a total of 12 L.G.A, Where questionnaires were administered to respondents in different fields of. Tourism, Geography, Geology, Economics, History and Mathematics, Totaling 120.

**Table, 3.3.1: Selected Tourist Zones, With Their Tourist Development Potential Spots in Kaduna state.**

S/N	Zone	Tourism Potentials	Predominant Character
1	Birnin Gwari	Kamuku National park, Birnin Gwari old settlement,Dutsin mai nono, Dogon ruwa water falls, Guaron Dutse.	Natural, Heritage/colonial
2	Giwa	Kabarin Allah	Heritage
3	Igabi	Relics of Amina city walls at Turunku, Trappco Ranch and resort, Fifth Chucker Ranch and Resort,Kangimi	Heritage/ colonial and

		dam.	modern
4	Zaria	Kufena Hill, Zaria dam St' Bartholomew church, Zaria city wall, Emirs palace.	Natural, Heritage/colonial
5	Kaduna north	Lord lugard hall, Arewa house, Sultan Bello mosque, Lord lugart bridge, Hassan katsina park	Heritage/Colonial and Modern
6	Ikara	Dutsin Zaki Ikara, Dutsin Longu Ikara, Dutsin Danlawai, Kurmin Kogi	Natural
7	Jaba	Nok ages caves, Nok terracotta head, Germinated tree on flat stone inside water,Samban hill.	Heritage/Natural
8	Jama'a	Ninzon water falls.Gwong hill	Natural
9	Kajuru	Pampada hill, Kajuru castle holiday Resort	Natural/Modern

<b>10</b>	Kaura	Afan festival, Kagoro hill (with numerous caves) Katagwan foot print.	Heritage/Natural
<b>11</b>	Sanga	Mada hill, Gwantu falls	Natural
<b>12</b>	Zango kataf	Avak at zango village(Historical cave), Matsirga water falls at madakiya, Abet hills at farman	Heritage/Natural

Source: Field Survey 2012



### 3.4 METHOD OF DATA ANALYSIS

#### 3.4.1 CONCEPT OF WEIGHTED SUM MODEL (WSM)

Multi-criteria decision making tools are widely accepted to researchers and decision makers for assessing tourism development potential. Weighted product model (WPM), Analytic Hierarchy Process (AHP), Multi-attribute Utility Theory (MAUT), Value Analysis (VA), Inferiority Ranking Method (SIR), Weighted sum model (WSM) are some common tools used in this regard. For simplicity and reliability with less quantitative data, the **weighted sum Method (WSM)** has been chosen in this study to assess the selected tourism development potentials in the state. The method selects social, physical and environmental attributes and quantifies them through ranking and scaling techniques, (Triantaphyllov, 2000).

#### **Weighted Sum Model (WSM) Sequential Steps:**

##### **Step 1: Level-1 Attributes and weight ( $W_i$ ) assignment**

As observed in different researches. Performance of tourism is dependent upon the quality of services provided as well as the socio-economic and socio-cultural background of the tourists. There is a wide range for destination choices of the tourists, though the choice value can be enhanced only by upgrading the quality of services. Thus the analysis for assessment of tourism potential is restricted with existing tourist infrastructure and proxy data of tourist attractions. Three broad aspects namely **physical, social and environmental** has been considered as level - 1 attribute in connection with assessing tourism potentials. For district level or region based tourism considerations, there may be similar qualities or levels for a single parameter. Hence, depending upon the regional setting and cluster of tourist areas the weight values of each of the three aspects, mentioned above, may be assigned. This assignment of weights may be worked through expert opinion survey, tourist survey, service providers, interview or experience. The

weight value for a certain parameter may be considered null (i.e. ignored) if they are similar throughout the zone. So, three different weights are considered ( $W_p$  for physical,  $W_s$  for social and  $W_e$  for environmental) in the first stage.

## **Step 2: Level-2 Attributes and Weight ( $w_i$ ) Assignment**

Each of level-1 aspect consists of set of variables those are considered as level-2 attributes.

These sets are explained as follows:

- 1) **Physical ( $W_p$ ) aspects** include geographic terrain, regional connectivity and vehicular accessibility, versatility in accommodation system, guide and tourist information factors, local souvenirs, tele-communications systems, availability and of quality and special foods, parking and other recreational facilities.
- 2) **Social ( $W_s$ ) factors** include existing tourist influx (for existing tourist spots only), intensity of fairs and festivals, timing to visit a spot, duration of stay, compatibility of the spot with surrounding land use, safety and security of the visitors, probability of social crimes, behavioral aspects of the operators of service providers etc.
- 3) **Environmental ( $W_e$ ) aspects** are probability of natural calamity during a specific time window, natural and anthropogenic threat, hazardous land use, quality of air and water pollution etc.

Inclusion or exemption of any attribute may vary from case to case. For example, if there is no probability of social crimes in any tourist spot or group of spots, the attribute may be ignored to simplify the computation.



**Table 3.4.1: Sample Example Showing Method of Ranking**

Attributes	Rank -1	Rank-2	Rank-3	Rank-4	Total
Attribute 1	<b>18</b>	14	9	9	50
Attribute 2	9	10	<b>17</b>	14	50
Attribute 3	10	<b>20</b>	12	8	50
Attribute 4	11	12	10	<b>17</b>	50

From the above table 3.5.1, every respondent is asked to rank the attributes (1, 2, 3 ...n) for each group or set separately according to their preferences. The ranking data is arranged in matrices separately for set. A Hypothetical sample has been provided for conceptualization of the method. Let us assume. There are 4 attributes for a group and 50 respondents has opined their preferences. So, every respondent will rank the parameters as 1, 2, 3, and 4. For each attribute, the sum of all ranks will be 50, now the columns indicate the comparative preferences for the ranks .**Table 3.4.1** explains a sample example for the ranking method. Here highest 18 respondents have voted attribute 1 as rank 1. Attribute 3 gets the maximum vote for rank -2, attribute 2 as rank -3 and attribute 4 as rank -4. The result indicates that the weight ( $W_i$ ) For attribute 1 should be maximum, followed by 3, 2 and 4. So, the values are prescribed reverse of their ranks as 4, 3, 2 and 1 respectively. Sum of the numbers is 10. After normalization (i.e. the sum of all weights will be 1), attribute 1 will obtain  $4/10$  i.e. 0.4, attribute 3 as 0.3, attribute 2 as 0.2 and attribute 4 as 0.1. In any case, if two votes are equal for two different attributes, the problem may be solve in two different ways (1) changing the sample size and (2) calculating the proportion of the values based on column values and choosing the larger one. If not possible, same weight values may be provided for two or more parameters, as necessary.

### Step 3: Intra-Attribute scaling (S<sub>j</sub>)

Level of quality or service for each attribute may not be similar for all the spots. Depending upon variations in quality/ quantity, **each attribute is scale in a 5-point or 3-point scaling** as required. **These scales are related to grades from 1- 5 or 1- 3** based on logical interpretation and quantification of various levels. Hence, the **step 1 and 2** indicates a global approach to be used for all parameters and step 3 is a local approach based on different variations or ranges set logically. For scaling ‘1’ **refers to the worst/weakest quality** and ‘5’ **indicates the best/strongest quality**. For computation, the lowest value is considered as **0.2**, Followed by 0.4, **0.6, 0.8** and the highest being **1**

### Step 4: Computation of Aggregate potential value

Potential value of a tourist spot is finally aggregated in an additive way. The expression is as follows:

**Total Potential (V) = Potential Value for Physical Aspects (V<sub>p</sub>) + Potential Value for Social Aspects (V<sub>s</sub>) + Potential Value for Environmental Aspects (V<sub>e</sub>)**

*Or, Total Potential (V) = W<sub>p</sub>\*[w<sub>1s1</sub> + w<sub>2s2</sub> +....+w<sub>nsn</sub>]physical + W<sub>s</sub>\*[w<sub>1s1</sub> + w<sub>2s2</sub> +....+w<sub>nsn</sub>]social + W<sub>e</sub>\*[w<sub>1s1</sub> + w<sub>2s2</sub> + ....+w<sub>nsn</sub>]environmental*

*Or, Potential (V) = ΣW<sub>i</sub>\*[Σw<sub>j</sub>s<sub>j</sub>]* where W<sub>i</sub> is the weight of Parameter level 1 for ith attribute, w<sub>i</sub> is weight of parameter level 2 for jth attribute and s<sub>i</sub> is the scaling grade for jth attribute of level 2. Value of W<sub>i</sub> **and w<sub>j</sub> will** range from 0-1 and s<sub>j</sub> **has 5 different values (0.2, 0.4, 0.6, 0.8 and 1).**

Major convenience of the equation is that it gives disaggregate values of three potential items separately along with a wholesome measure. All of the potential values will range from 0-1. Lower values indicate weakness compared to strength. The ultimate value works as an indicator for tourism potential; however, it may not identify the intensity of lacuna and strength in

different aspects. Hence, for ease of further suggestions and proposal each of the potential values (physical, social and environmental) has been considered for further interventions and proposals. As for example, some spots may have higher social values but less infrastructural values. So, suggestions may address the issues to prepare set of minimum requirements for development.

### **Step 5: Grouping of Spots and Analysis**

List of tourist spots and respective potential values (in aggregate and distributed) are assessed. Hereinafter, the spots are clustered in groups based on proximity to provide common infrastructure as much as possible to optimize the resource. Potential of each group is measured from mean values of the spot values. This provides a clearer scenario for setting up proposals. In this step, new tourist spots or recreational spaces may be searched out and tagged with the group to enhance the probability for revenue generation.

## CHAPTER FOUR

### 4.0 DATA PRESENTATION AND ANALYSIS

#### 4.1 INTRODUCTION

This section analyzed results collected from opinion surveys, survey questionnaires interviews and reconnaissance's survey, using weighted sum model (WSM) chi-square and percentages.

#### 4.2 Results from weighted sum model (WSM)

**Result of Step 1:** Initially the environmental aspects have been excluded due to its homogeneity in most of the sites. Hence, the study has been pursued by taking physical and social aspects. 120 respondents from various fields of economics, planning, geography, statistics, mathematics and also experienced tourists suggested their ranking on physical and social aspects as prescribed. As per the opinion, weights ( $W_i$ ) for physical and social has been considered **as 0.4 and 0.6 respectively**. It may vary from case to case.

**Result of Step 2:** the attributes under social and physical aspects were selected from an elaborate list through opinion surveys.

The social aspects include three attributes in the preference order of *(1) Annual tourist influx, (2) Average duration of stay and (3) Frequency of fairs and festivals*. Data for annual tourist influx is hardly recorded in most of the cases. However, several proxy data as ticket sale in different spots, sale in restaurants, have been considered to develop a range of data to be used in this study. In most of the spots, the visitors prefer for day-tours. Few tourist sites are associated with traditional fairs and festivals in the district which enhance the potential. Hence, depending upon the duration and frequency, the third attribute is marked.

From the opinion survey of 120 respondents, the physical aspects have been distributed over 7 parameters. The preference order is (1) *Physical Accessibility / Connectivity* (2) *Accommodation* (3) *Vehicular Accessibility [0.178]* (4) *Food and Market* (5) *Tourist Information and Guide Service* (6) *Car parking facility* and (7) *Local Souvenirs*. **Table 4.2.1** explains the value of weights for the selected attributes.

\

**Table 4.2.1: Weight of Attribute level-2**

<b>Attributes and Ranks</b>		<b>Weights</b>
<b>Social Attributes</b>		
Rank 1	Annual Tourist influx	0.5[3/6]*
Rank 2	Average Duration of stay	0.33[2/6]
Rank 3	Frequency of fairs and festivals	0.17[1/6]
*Cumulative Rank value 1+2+3=6		
<b>Physical Attributes</b>		
Rank 1	Physical Accessibility/Connectivity	0.250[7/28]*
Rank 2	Accommodation	0.214[6/28]
Rank 3	Vehicular Accessibility	0.178[5/28]
Rank 4	Food and Market	0.142[4/28]
Rank 5	Tourist information and Guide Service	0.107[3/28]
Rank 6	Car parking facility	0.071[2/28]
Rank 7	Local Souvenirs	0.035[1/28]
*Cumulative Rank value 1+2+3+4+5+6+7=28		

Source: Field survey

**Table, 4.2.1:** As shown on the table above, based on the preferences of the respondents opinions in enhancing the tourism potentials in the studied tourism potential sites, the highest votes on social aspects, is Rank-1, ( **S<sub>1</sub>**) tourist influx, followed by Rank-2, (**S<sub>2</sub>**)Average duration of stay and Rank-3, (**S<sub>3</sub>**) Intensity of fairs and festivals, with assigned weights of, 0.5,0.33,and 0.17, respectively. The highest votes on the physical aspects, is Rank-1, (**P<sub>1</sub>**) Physical Accessibility, followed by Rank-2, (**P<sub>2</sub>**) Accommodation and the least local souvenirs (**P<sub>7</sub>**), with assigned weights ranging from 0.250 to 0.035.

**Result of Step 3: 5-point** and/or **3-point** scaling of an individual attribute has been framed on the basis of suitable logical interpretations to quantify the qualitative aspects. As mentioned previously, **1 refers to worst situation** and **5 as the best**. Interpretations of comparative marking of 1-5 or 1-3 are based on availability of services. **Table 4.2.2** exhibits a sample scaling of a single parameter, the values from 0.2 – 1.0 has been provided. For three attributes namely Food & Market, Souvenir and Accommodation, 3-point scaling has been used where the minimum value has been considered as 0.2 and the highest being 0.6. The values are demonstrated in **Table 4.2.3**.

**Table4.2.2: Interpretation of Scaling Attribute**

Attribute	1(0.2)	2(0.4)	3(0.6)	4(0.8)	5(1.0)
Accessibility/ Connectivity	Narrow Road, only pedestrian , no vehicle access possible, bad road condition	Narrow Road, pedestrian and vehicle, bad condition	Moderate road, vehicle allowed, bad road condition/ narrow road vehicle allowed, good condition	Wide road, vehicle allowed and moderate road condition	Wide road, vehicle allowed and good condition

Source: Field survey, 2012

**Result of step 4:** Aggregate potential Value of each tourist site in the state has been calculated based on the formula potential  $(V) = \sum W_i * [\sum w_j s_j]$ . The adjusted formula is elaborated in the following stages:

(a) Total potential Value  $(V_T(\sum W_i * [\sum w_j s_j])) = 0.6 * \text{Potential Value in Social Aspects}(V_s) + 0.4 * \text{Potential Value in Physical Aspects}(V_p)$ .

(b) Potential in social Aspects  $V_s (\sum w_j s_j) = 0.5 * \text{Grade in Tourist Influx}(S_1) + 0.33 * \text{Grade in Average Duration of Stay}(S_2) + 0.17 * \text{Grade in Intensity of Fairs and Festivals}(S_3)$



(c) Potential Value in physical Aspects,  $V_p (\Sigma w_j p_j) = 0.25 * \text{Grade in connectivity/Accessibility (P1)} + 0.214 * \text{Grade in Accommodation (P2)} + 0.178 * \text{Grade in Vehicular Accessibility (P3)} + 0.142 * \text{Grade in Food and Market (P4)} + 0.107 * \text{Grade in Information and Guide Service (P5)} + 0.071 * \text{Grade in Car Parking Facility (P6)} + 0.035 * \text{Grade in Souvenirs (P7)}$  .  
 Potential values of social ( $V_s$ ), physical ( $V_p$ ) and total ( $V_T$ ) **ranges from 0 to 1**.

For computation the lowest value is considered as **0.2**, followed **by 0.4, 0.6, 0.8** and the highest being **1**,  $S_1-S_3$  reps the social variables ( $S_1$ =Tourist influx,  $S_2$ =Average duration of stay,  $S_3$ =Intensity of fairs and festivals), while  $P_1-P_7$  reps the physical variables ( $P_1$ =Connectivity/Accessibility,  $P_2$ =Accommodation,  $P_3$ =Vehicular Accessibility,  $P_4$ =Food and market,  $P_5$ =Information and Guide service,  $P_6$ =Car parking facility,  $P_7$ =Souvenirs),  $V_s$ =Potential value of social aspects,  $V_p$ =Potential value of physical aspect,  $V_T$ = Total potentials of physical and social aspect . As shown in the table below.

**Table 4.2.3: POTENTIAL VALUES OF SELECTED TOURIST SITES IN KADUNA**

Zones	Potential Sites	S <sub>1</sub>	S <sub>2</sub>	S <sub>3</sub>	V <sub>s</sub>	P <sub>1</sub>	P <sub>2</sub>	P <sub>3</sub>	P <sub>4</sub>	P <sub>5</sub>	P <sub>6</sub>	P <sub>7</sub>	V <sub>P</sub>	V <sub>T</sub>
Birnin Gwari	Kamuku National park	1	0.2	0.8	0.700	0.4	0.2	0.4	0.8	0.8	0.6	0.8	0.6062	0.4224
	Birnin Gwari old settlement	0.4	0.2	0.4	0.334	0.4	0.2	0.4	0.2	0.2	0.6	0.6	0.3774	0.3713
	Dutse mai Nono	0.2	0.4	0.4	0.300	0.2	0.2	0.2	0.2	0.2	1	0.2	0.2564	0.2825
	Dogon Ruwa water falls	0.6	0.2	0.4	0.434	0.2	0.2	0.2	0.2	0.6	0.6	0.8	0.2918	0.3771
	Guaron Dutse	0.2	0.2	0.8	0.4020	0.2	0.2	0.2	0.2	0.2	1	0.2	0.2564	0.2825
Giwa	Kabarin Allah	0.4	0.2	0.4	0.334	0.2	0.2	0.2	0.2	0.2	0.2	0.2	<b>0.235</b>	0.2548
Igabi	Relics of Amina city walls	0.4	0.2	0.4	0.3340	0.4	0.2	0.2	0.2	0.6	0.6	0.8	0.3418	0.3371
	Trappco Ranch and Resort	1	0.2	0.8	<b>0.702</b>	0.4	0.6	0.4	0.4	1	0.2	1	0.689	0.5209
	Fifth Chucker and resort	1	0.4	0.8	<b>0.768</b>	0.6	0.4	0.4	0.8	0.2	0.6	1	0.6857	0.5924

	Kagimi Dam	1	0.4	0.8	<b>0.768</b>	1	0.4	1	0.2	1	0.6	0.4	0.600	0.562
Zaria	Kufena Hill	0.4	0.2	0.4	0.334	0.2	0.2	0.2	0.2	0.2	0.2	0.2	0.384	0.397
	Zaria Dam	0.8	0.2	0.6	<b>0.700</b>	0.4	0.6	1	0.4	1	0.2	1	<b>0.669</b>	0.689
	St, Bartholomew Church	0.4	0.2	1	0.436	0.2	0.2	0.2	0.2	0.4	0.4	1	<b>0.648</b>	0.512
	Zaria city wall	1	0.2	0.8	<b>0.768</b>	0.6	0.6	0.6	0.2	1	0.2	1	0.562	0.685
	Emir's palace	1	0.2	0.8	<b>0.768</b>	0.4	0.2	0.6	0.2	1	0.6	0.6	0.462	0.645
Kaduna North	Lord Lugart hall	0.8	0.2	0.8	0.700	0.4	0.4	0.8	0.8	0.8	0.2	1	0.669	0.719
	Arewa house	1	0.2	0.8	0.750	0.6	0.4	0.8	0.2	1	0.2	1	0.562	0.685
	Sultan Bello mosque	1	0.4	1	<b>0.802</b>	0.6	0.2	1	0.2	1	0.4	1	0.569	0.729
	Lord Lugard bridge	0.8	0.2	1	0.630	0.6	0.2	1	0.2	0.6	0.4	1	0.522	0.474
	Hassan katsina park	1	0.4	1	0.800	0.6	0.2	1	0.3	0.2	0.6	0.6	0.584	0.474

Ikara	Dutsin Zaki Ikara	0.4	0.2	0.4	0.334	0.4	0.2	0.4	0.4	0.6	0.6	0.8	0.4274	0.3713
	Dutsin Longu Ikara	0.4	0.2	0.4	0.334	0.2	0.4	0.2	0.4	0.2	0.2	0.6	0.3722	0.3112
	Dutsin Danlawai kurmin kogi	0.2	0.4	0.4	0.300	0.2	0.2	0.2	0.4	0.2	0.2	0.4	0.3143	0.3200
Jaba	Nok ages cave's hill	0.6	0.2	0.8	0.600	0.6	0.2	0.6	0.2	0.6	0.2	0.6	0.543	0.5606
	Terracuta head	0.8	0.2	1	0.630	0.6	0.2	0.6	0.2	0.2	0.4	0.8	0.4914	0.5434
	Germinated tree on flat stone	0.4	0.2	0.4	0.334	0.4	0.2	0.2	0.2	0.6	0.6	0.8	0.3846	0.3654
	Samban hill	0.4	0.2	0.8	0.402	0.3	0.2	0.2	0.4	0.6	0.4	0.6	0.3494	0.3005
Jama'a	Ninzon water falls	0.4	0.2	0.8	0.400	0.4	0.2	0.6	0.4	0.6	0.4	0.4	0.3842	0.3950
	Gwong hill	0.4	0.2	0.4	0.334	0.4	0.2	0.2	0.2	0.6	0.6	0.2	0.3418	0.3371
Kajuru	Pampada hill	0.6	0.2	0.6	0.468	0.6	0.4	0.6	0.2	0.4	0.6	0.4	0.4276	0.4518
	Kajuru castle holiday	0.8	0.6	0.8	0.7020	0.6	0.6	0.4	0.8	0.2	0.8	0.2	5.628	0.6849

	Kagoro hill (with numerous caves)	0.4	0.2	0.8	0.402	0.2	0.4	0.8	0.4	0.8	0.2	0.8	0.685	0.595
	Katagwan foot print	0.4	0.2	0.4	0.334	0.2	0.2	0.6	0.2	0.4	0.2	0.6	0.349	0.312
Sanga	Mada hills	0.4	0.2	0.8	0.400	0.2	0.4	0.6	0.2	0.4	0.6	0.6	0.323	0.333
	Gwantu falls	0.4	0.2	0.8	0.402	0.4	0.2	0.2	0.6	0.6	0.6	0.8	0.400	0.326
Zangon Kataf	Avak at zango village	0.2	0.2	0.6	<b>0.268</b>	0.2	0.2	0.2	0.2	0.6	0.2	0.4	0.349	0.300
	Matsirga water falls	0.4	0.2	0.4	0.334	0.8	0.4	0.2	0.6	0.6	0.6	0.8	0.420	0.368
	Abet hills	0.2	0.2	0.6	<b>0.268</b>	0.6	0.2	0.2	0.2	0.6	0.2	0.4	0.349	0.300

Source: Field Survey 2012

## RESULTS OF STEP FOUR

The potential value of social aspect ranges from 0.268 in Zangon Kataf up to 0.802 in Kaduna North, higher social values are obtained in different parts of Zaria, and Igabi, Kaura, Birnin Gwari, and Sanga exhibit lower social value due to less number of tourist influx as well as less duration of stay for the people. Physical infrastructure has been found highest in Kaduna North (0.719) and lowest in Kabarin Allah in Giwa (0.235).

The reliability of the methodology has been proved by the overall values of potentials, the highest value is obtained by Sultan Bello mosque (0.728) which is a famous mosque in Kaduna North, Arewa house and Lord Lugard hall are also famous destinations followed by Kaura and

their potentials has been quantified as 0.689 and 0.685 respectively, Jaba holds precious exhibits however, lack of infrastructures has pushed it backwards. The values indicated that most of the spots located in Kaura, Igabi, Kaduna and Zaria, are in the higher side, hence list intervention are required in those sites except Kufena Hill which needs much attention.

**RESULT OF STEP FIVE AND DISCUSSIONS:** Potential values for a particular tourist spot indicates the level of attractiveness and this has been quantified previously. However, proposing detail strategies of development for each spot may be uneconomic and non-feasible. So, the intensity of development proposals may be optimized by grouping / clustering of spots. Provision of common infrastructure, not only optimize the economic involvements but also, help to keep purity of individual spots as much as possible. Hence, clustering has been designed based on proximity of the spots. Proximity is mostly dependent upon physical distance but also associates more parameters like circuit coverage, option for walking or using motorized vehicle, duration of stay per spot, probability of night stays, time windows for festivals, proximity of transport junctions, proximity of local settlement, type of trip, socio-economic and socio-cultural aspects of visitors. Based on the proximity and existing tourism pattern, the 12 identified zones have been clubbed into 6 clusters, these are (1) Kaduna-Ikara (2) Zaria-Igabi (3) Jaba-Jama'a (4) Kajuru-Kaura (5) Birnin Gwari-Giwa(6)Sanga-Zango kataf .Cluster based potential values have been calculated from table 4.2.3.

**Table, 4.2.4: Summary of Cluster Based Potential Data.**

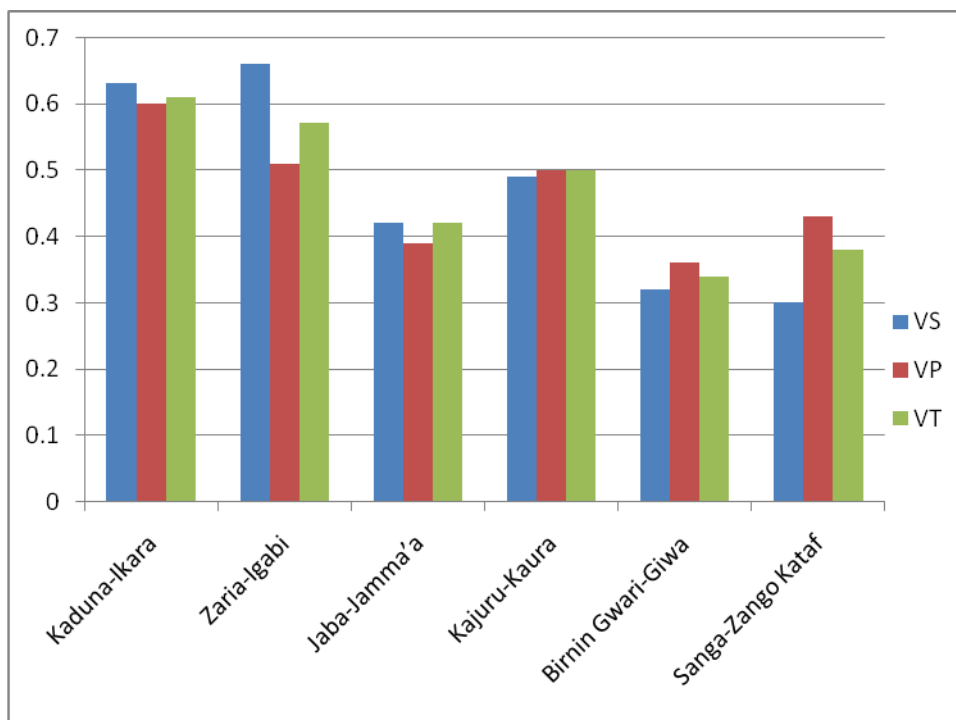
S/N	Clusters	Potential Values of Social Aspects (VS)	Potential Values of Physical Aspects (VP)	Total Potential Values of Both Social and Physical Aspects (VT)
1	Kaduna-Ikara	0.63	0.60	0.61
2	Zaria-Igabi	0.66	0.51	0.57
3	Jaba-Jama'a	0.42	0.39	0.42
4	Kajuru-Kaura	0.49	0.50	0.50
5	Birnin Gwari-Giwa	0.32	0.36	0.34
6	Sanga-Zango Kataf	0.30	0.43	0.38

Source: Field Survey 2012.

(1) **Kaduna-Ikara**, Cluster obtained the highest score for overall potential, strategic location of this spots get advantage of railway junction's highways and public amenities due to closeness to the state capital. The spots are visited by the passers-by people and tourist.

(2) **Zaria-Igabi**, This Cluster attracts tourist mostly on educational and medical purposes. The cluster is located outside the state capital. Hence a clean environment is an added advantage which is reflected in the social value of 0.66, highest of all the overall potential of this cluster has been reduced, due to narrow streets, absence of rest centre's and toilet's in appropriate intervals, absence of organized parking space.

- (3) **Jaba-Jama'a:** This is a fantastic tourist cluster comprising of ancient and medieval terracotta templates museum and accommodation. Lack of proper access, signages on roads, and guide has pushed the cluster backward.
- (4) **Kajuru-Kaura,** is located in the southern part of the state kaura is famous for Afan festival on the first day of January every year, which attracts a significant number of tourist annually.
- (5) **Birnin Gwari-Giwa:** Is located in the north western part of the state. It severely lacks tourist infrastructure, especially for foreigners and researchers. Though the potential value seems to be least.
- (6) **Sanga-Zango kataf:** This cluster has never been developed as a tourist spot, though; it deserves high future potential and extensive development in physical infrastructure and advertisement.



**Figure IV: Clustered Potential Value Zones in Kaduna State**



## CHAPTER FIVE

### SUMMARY, RECOMMENDATION AND CONCLUSIONS.

#### 5.0 INTRODUCTION

This chapter covers the summary of findings established in the course of the research. Recommendations are made in line with established results with the aim of improving the tourism sector in the state.

#### 5.1 SUMMARY

The findings of this study, from the opinion surveys of experts from different fields on tourism, geology, geography, economics, mathematics.

From table 4.2.1, the highest votes on social aspect is tourist influx, while the least is intensity of fairs and festivals, with assigned weights of 0.5, and 0.17 respectively, while the highest on physical aspects is physical accessibility, and the least local souvenirs. Physical infrastructure has been found highest in Kaduna north local government area (0.719) and lowest in Kabarin Allah in Giwa local government area (0.235).

The results from the weighted sum model (WSM), indicates that potential values of particular tourist spots indicates the level of attractiveness, some tourist spots have higher social values and low physical values and vice versa, therefore development of each spot may be uneconomic and non-feasible in the State.

Result of step five clubbed the identified "12" tourist zones into "6" clusters, based on the existing tourism pattern, proximity and proximity of local settlements to generate demand around these potentials.

Cluster based potential data has been calculated and Kaduna-Ikara cluster has the highest potential and the least, Birnin Gwari-Giwa cluster as shown in table 4.2.4.

## **5.2 GENERAL RECOMMENDATIONS**

On the basis of this research thesis, it is important to make the following recommendations with the view to achieving a sustainable tourism development in Kaduna State.

(1) Since there are abundance tourism resource's in Kaduna like the proposed Kagoro hill project in the southern part of the state and others, government and other stakeholder's should capitalized on the resource's as a prerequisite for tourism development. This is called general precondition for tourism development, by Wall and Matheison (2006). That is, there must be plentitude of tourism resource's sustainable macro economic situation and economic growth and international relations for tourism to develop.

(2) Since tourism can only develop and survive if there are adequate infrastructural facilities, government and other stakeholder's should ensure the provision of these infrastructural facilities in order to facilitate tourism development in Kaduna State. A fundamental requirement in developing countries is to incorporate elements of stability within their development plans. Stability can be enhanced through the provision of diversity of facilities and services which cater to a number of tourist types, and these facilities must be comparable in quality and competitive in price with those of other destinations.

(3) Since fund is the major ingredient for any type of development, including tourism, the funding mechanism should be overhaul. Government and other stakeholders should ensure the provision of adequate fund for tourism development through the implementation of National Tourism Development Fund and encouragement of Annual Budgetary Allocation.

Also, at both domestic and international fronts, the national orientation agency, should embark on image laundering and water down the negative image about tourism, thus, intimating tourists and the host communities of the attractions in Kaduna State and the hospitality of her people.

(3) The national tourism policy should be adequately implemented to command tourism magnet in Kaduna State of Nigeria.

(4) Effort should be made by Nigerian government to ensure the involvement of the three tiers of governments as well as the private sectors in tourism development. Organizational bodies at all levels should attempt to coordinate development and marketing initiatives so that opportunities for tourist are expanded and returns to the destination areas are maximized.

(5) State and Federal government should see security and safety issues as problems to be addressed on national level and incorporate in National policies so as to provide good security network through accurate dialogue between the people and the federal government in order to create a crime-free society.

(6) Effort also should be made for tourist destinations to embrace advances in technology trends and the adoption of sustainable strategy in tourism development so as to be in line with modern technology.

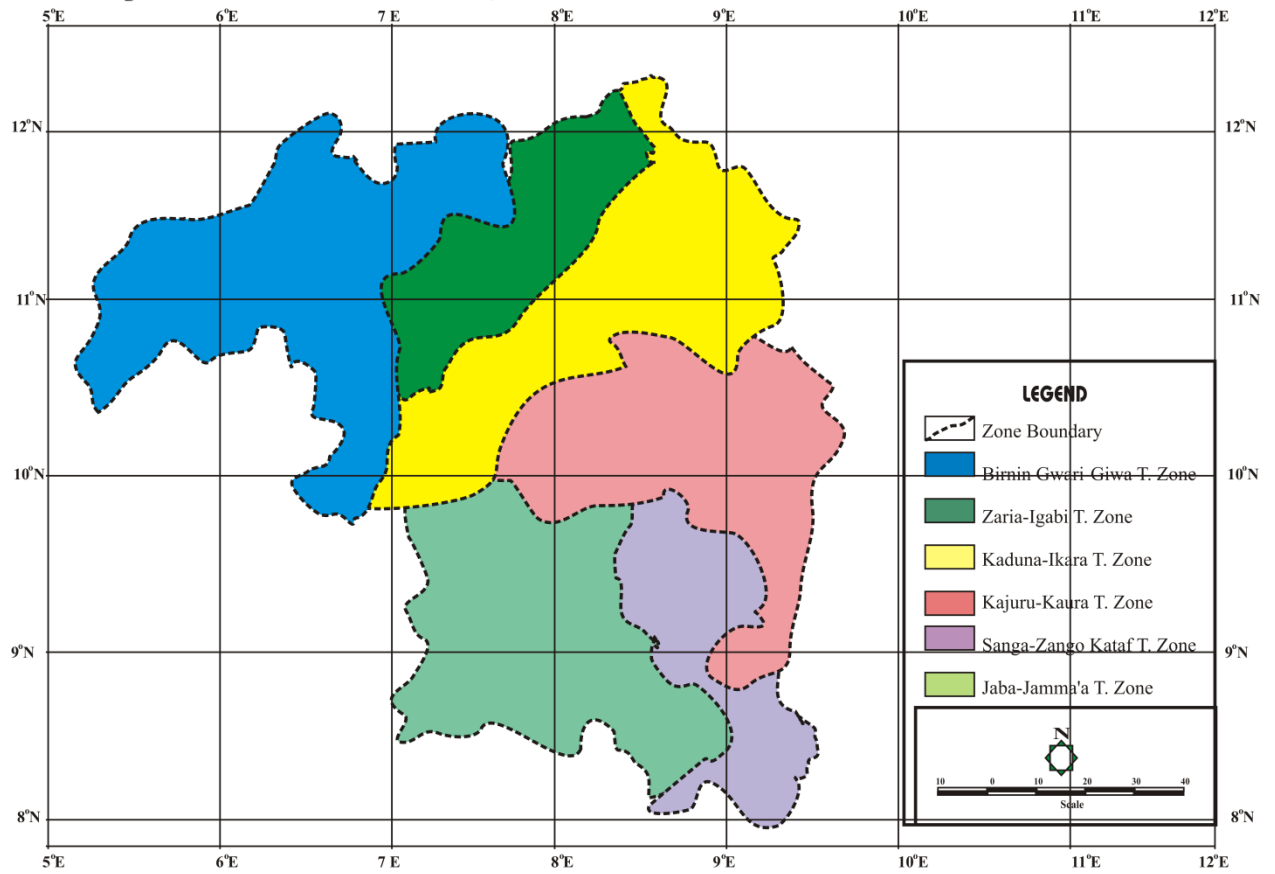
(7) The precincts of Jama'a, Kajuru, Kaura, Sanga possess medium range potential values, which indicates two strategies for intervention:

1. Appropriate intensity of planning intervention is necessary
2. Those spots may be connected with the higher value zones for direct tourist inflation. Lowest values are obtained in Sanga, Giwa and Zango Kataf. Development of tourism in those potentials is tough, but possible, if new nature- based spots are indentified in proximity of those areas and extensive augmentation of physical infrastructure and advertisement are done.

## **2.1 Recommendation at the state Ministry of tourism and culture**

- Organizing sensitization workshops and seminars with local theatre practitioners, artisans, craftsmen
- Organizing weekly entertainment events for the public
- Setting up of culture and tourism committees at all local governments
- Recruitment of new staff and re-training of existing ones to meet the needs and challenges of today's tourism development.
- Aggressive marketing and promotion of tourism products
- Exposure of staff to modern tourism trends at both national and international workshops seminars and exhibitions.
- Clustering of the tourism potential spots, should be embarked upon, to enhanced potential value of the clustered zone, and which will be economical to developed by the government, as proposed in (fig iv), below.

**Fig III: PROPOSED TOURISM ZONES, KADUNA STATE**



Source: Author (2012).

### **5.3 Conclusion**

The study has attempted to assess the tourism potential values of selected tourism spots in Kaduna state, using expert opinion survey from different fields using weighted sum model, the physical and social aspects was used excluding the environmental aspect due to the absence of its attributes in these potential sites. The result of the weighted sum model, reveals that some potential sites have higher physical values than the social values and vice versa, therefore Clustering of the tourist sites was done based on attributes to further add higher values to the clustered sites.

Instead of 5-point scaling, a 10-point scaling may work better. Workability of a blend of multiple decision tools may also be examined. However, there are many possibilities for fine tuning for similar studies to achieve the goals of sustainable development, economic upliftment and social benefits in the state.

## REFERENCES

- Adejuwon, (2009). The Travails of Tourism in Africa, Constraints and Potentials. East African Educational Publishers, Kenya.
- American Federation of Information Research (AFIR), (2001), Problems of tourism development in Nigeria. Austin publications
- Ahmed, M. (2004). Kaduna State Tourism Position Paper. 4<sup>th</sup> Meeting of the Presidential Council on Tourism.
- Ayibe, F. (2008). Is Nigeria a Preferred Tourist Destination. Accessed 20/12/2001. Available on [urp/http/www.slideshare.Net.is-nigeria-a-preferred Tourist-Destination](http://www.slideshare.net/is-nigeria-a-preferred-tourist-destination).
- Ashouri, P. & Fariyadi .S. (2010), “Potential Assessment of Nature-Based Tourism Destinations Using MCA Techniques (Case Study: Lavasan-e Koochak)”, Journal of Environmental Studies, Vol. 36, No. 55.
- Aniah, E. (2005). Patronage of Ecotourism Potentials as a Strategy for Sustainability. Journal of geography and able tourism development in Cross River State-Nigeria geology, Vol 1, No. 2, pp. 20-27.
- Adeyemi, O. (2012). Analysis of Attractiveness of Zaria as a Tourist Destination. Unpublished M.SC thesis, Department of Urban and Regional Planning, Ahmadu Bello University Zaria, Nigeria.
- Bako, P. (2012). A Strategic Planning Model for Tourism Development in Southern Kaduna. Unpublished M.SC thesis, Department of Urban and Regional Planning, Ahmadu Bello University, Zaria, Nigeria.
- Becken, S. (2005). "The Role of Tourist Icons for Sustainable Tourism." Journal of Vacation Marketing, 11(1), 21–80.
- Balogwu, S. (1999). A Path Analytic Model of Visitation Intention Involving Information, sources, socio-psychological motivations and destination image. Journal of travel and tourism marketing. Vol. 21, pp-75-82.
- Bulai.M. & Iatu.C. (2011) “New Approach in Evaluating Tourism Attractiveness in the Region of Moldavia (Romania)”, International Journal of Energy and Environment, Issue 2, Vol 5, pp-165-174.
- Brown, F. (1998). Traveling With a Purpose: Understanding the Motives and Benefits of Volunteer Vacationers. Current issues in Tourism, 8 (6) P. 479-496.
- Brown, S. & Morrison A.M (2003) Expanding Volunteer Vacation Participation. An exploratory study on the mini-mission concept. Tourism recreation research 28. (3) p. 73-82.
- Burns, P. (2004). Paradoxes in Planning: Tourism Elitism or Brutalism? Annals of tourism research, 26 (2) p. 329-348

- Copper, C. et al, (2008). Tourism: Principles and Practice (Book), Published 22/05/2008,
- Chukwuemeka, I. (2009). Nigeria: Successes And Challenges, Tourism Review.com *DESTINATION: Nigeria-Unspoiled and authentic..* <http://www.renewreservation.com>
- Chon, K. (1990). The Role Of Destination Image In Tourism: A review and discussion. *The Tourist Review*,
- Chhabra, D. (2003) "The Significance of Festivals To Rural Economies: Estimating the Economic Impacts of Scottish Highland Games in North Carolina." *Journal of Travel Research*, 41 (4) 421–427.
- Crouch, G. (2011). "Destination Competitiveness: An Analysis of Determinant Attributes." *Journal of Travel Research*, 50(1), 27–45.
- Chon, K.S. et-al. (1989). Trends in Hospitality Management literature. A content analysis *Hospitality Education and Research Journal*.
- California National Resource Agency, (2010). White Paper and Action Plan. The future of National Resource Management.
- De Keyser, R. & Van hove N. (1994) "The Competitive Situation of Tourism in the Caribbean Area Methodological Approach" *Tourism Review*.
- Dieke, P. (2000) *the Political Economy of Tourism Development in Africa Cognizant Road and Rail Network Corporation: New York*
- Eja, E. & Ajake, A. (2005). Tourism Potentials as Strategy for Sustainable Development of the Niger Delta Region of Nigeria. *International Journal of sociology and anthropology*, vol.2, No.1, pp. 53-60.
- Edward, M. & George, B.P. (2008). Destination of Kerala as an International Tourist Destination.
- Encarta. (2005) *English Dictionary, Third Edition. Bloomsbury Publisher's Plc.*
- Encarta, (2009) *English Dictionary, Second Edition.* [www.dictionary-for.me/free](http://www.dictionary-for.me/free)
- English Dictionary, (2000), Forth Edition. [www.dictionary-for.me/free](http://www.dictionary-for.me/free)
- Formica, S. (2000) "Destination Attractiveness as a Function of Supply And Demand Interaction", A PhD Dissertation submitted to the Faculty of the Virginia Polytechnic Institute.
- Faulkner, B. O, et-al. (1991). "Destination Competitiveness an Explanatory Examination of South Australia Core Attractions" *Journal of Vacation Marketing*, 5(2): 125-139.
- Falade, O. (2001), Understanding Tourism in Nigeria, Ibadan JIS Publisher's.
- Grefe, X. (2009). "The Economic Impact of the Louvre."
- Getz, D. (2008). "Event Tourism: Definition, Evolution, and Research." *Tourism Management*, 29(3), 403–428.



- Go, X. & Zhang .K. (1997), Classic Reviews in Tourism-page-94-Google book result.
- Gunn, C.A (1988).Tourism planning, Newyork..
- Gunn, C.A (1997).Vacation Scape: Developing Tourist areas (Second edition).
- Hall, C. (1989). "The Definition and Analysis of Hallmark Tourist Events." *GeoJournal*, 19(3), 263–268.
- Hassan, S. (2000). “Determinants of Market Competitiveness in an Environmentally Sustainable Tourism Industry” *Journal of travel Research*, 38 (February):239-139.
- Hawkins, D. & Mann .S. (2007). The World Bank Role in Tourism Development. *Annals of Tourism research* 34(2) 348-363
- Ivan, T. & Vodenska, M. “Spatial Analysis of The Tourism Potential in Bourgas District”, [web: [http://www.datamap-bg.com/conference\\_cd/pdf/P1\\_316\\_Tcholeev\\_Vodenska.pdf](http://www.datamap-bg.com/conference_cd/pdf/P1_316_Tcholeev_Vodenska.pdf)]
- International Development Research Centre (1999), Annual Report, idrc.Ca/cn/Annual % report 201999-2000 pdf.
- Johnson,.R. (2001).”Identifying Competitive Strategies for Successful Tourism Destination Development’ *Journal of Hospitality and leisure marketing*.
- Jafari, J. (2001). The Signification of Tourism. Chapter 2 in Smith, V. (2001). Hosts and guests revisited. *Tourism issues of the 21<sup>st</sup> century cognizant communication corporation*: New York.
- Krippendorf, K. (1980). Residents’ Perceptions on Tourism Impacts- cited by 730, *Annals of Tourism Research*, Volume 19, pages 665-690.
- Kozak.M. & Rimmigton.M. (2000).Tourist Satisfaction with Mallorca, Spain as an Off-Season Holiday Destination. *Journal of travel research*.
- Krejijie.R.V.(1970). Determining Sample Size for Research Activities. [[opa.aprrp.educ/InvinsDogs/krejijie and morgan.pdf](http://opa.aprrp.educ/InvinsDogs/krejijie%20and%20morgan.pdf)].
- Kim.C. & Dwyer. I. (2003).Destination Competiveness and Bilateral Tourism Flows between Australia and Korea. *Journal of tourism studies*.
- Kaduna state Ministry of Culture and tourism (2011) Tourist Map of Kaduna State, Nigeria: Up to date information. Sameka Press. [www.ministryofcultureandtourismkd.com](http://www.ministryofcultureandtourismkd.com).
- Lickorish, L. J (1991) Developing Tourism Destinations; Policies and Perspectives. Longman Group, UK Limited.
- Lord Cultural Resources & Brain Trust. (2009). "Ontario Cultural and Heritage Tourism Product Research paper."
- Lew, A. A. (1987). "A Framework of Tourist Attraction Research." *Annals of Tourism Research*, 14(4), 553-575.
- Ministry of culture and tourism (2011). Kaduna Tourism Report. Government of Kaduna State.

- Marris, T. (1987). "The Role and Impact of Mega-events and Attractions on Regional and National Tourism Development Resolutions." *Tourism Review*, 42(4), 3–12.
- Moscardo, G. (2001). Visitor Evaluations of Built Tourist Facilities: Pontoons on Great Barrier Reef. *The Journal of Tourism Studies* Vol. 12, No. 1, May 2001.
- Muazu, M. (2010). *Glimpses of Kaduna State*. Utivision Ltd., Kaduna, Nigeria.
- Matheison and Wall, (1982). What is Tourism Lesson? [www.prm-nau.edu/prm300/what-is-tourism-lesson.htm](http://www.prm-nau.edu/prm300/what-is-tourism-lesson.htm).
- Nissan, E., et al, (2010). "Relationship Between Tourism and Economic growth." *The Services Industries Journal*, 31(10), 1567–1572
- Organization for Economic Co-operation and Development, (OECD). (1994) Environmental Indicators, [www.oecd.org/dataoecd/37/1/33703867.pdf](http://www.oecd.org/dataoecd/37/1/33703867.pdf).
- Okechuku L.C (1990). Encouraging National Development Through The Promotion of Tourism the Place of Archeology. *West Africa journal of Archeology*. vol 20
- Okpoko, et al (2002) *Tourism in Nigeria*. Afro-Orbis Publications Ltd. University of Nigeria, Nsukka, Nigeria.
- Ozo, J. U. et-al, (2010). *Introduction To Project Writing*. Enugu Sonny Enterprises.
- Okoli .C. (2001). *Tourism Development and Management in Nigeria*. Enugu: Jee publication.
- O'Neil .M.J. et-al, (2002). 70101, Omahany, Wine Tourism WEB. Pdf-sustainable tourism [www.crctourism.com.au/bookshop/70101:2000 mahany](http://www.crctourism.com.au/bookshop/70101:2000 mahany).
- Pearce, D.G. (2001). An Integrative Framework for Urban Tourism Research. *Annals of tourism research*, 28(4), P. 926-946.
- Preuss, H. (2007). "The Conceptualization and Measurement of Mega Sport Event Legacies." *Journal of Sport & Tourism*, 12(3-4), 207 228.
- Roche, M. (1994). "Mega-Events and Urban Policy." *Annals of Tourism Research*, 21(1), 1–19.
- Sharply R. (2002) *Tourism: A vehicle for Development* Chapter 1 in Sharply, R & Telfer, D. (2002). *Tourism and Development: Concepts and Issues*. Channel view publications: New York.
- Sternberg, E. (1997). "The Iconography of the Tourism Experience." *Annals of Tourism Research*, 24(4), 951–969
- Swarbrooke, J, (2005). *The Development and Management of Visitor Attractions*, 2<sup>nd</sup> ed, Butterworth- Heinemann.
- Smith S.L.J (1994). The Tourism Product. *Annals of Tourism Research* 21(3) pp. 582-595.
- Shapley, R. (2007) "Flagship Attractions and Sustainable Rural Tourism Development: The Case of the Alnwick Garden, England." *Journal of Sustainable Tourism*, 15 (2), 125–143.

Tang, L., et al. (2009). "Effectiveness Criteria for Icons as Tourist Attractions: A comparative Study between the United States and China." *Journal of Travel and Tourism Marketing*, 26(3), 284–302.

Triantaphyllov, T. (2000). "Multi-Criteria Decision Making: An Operations Research Approach", *Encyclopedia of Electrical and Electronics Engineering*, (J.G. Webster, Ed.), John Wiley & Sons, New York, NY, Vol. 15, pp. 175-186, 1998.

United Nations Conference on Trade and Development (2008) UN Recognition of The least Developed Countries. Available at

<http://www.unctad.org/templates/page.asp?intletemID=3618long=1> accessed December 2, 2010.

United Nations Development Program me (1990) Human Development Report. Oxford University Press. New York

United Nations Development Program me (2006). Human Development Report. Oxford University Press: New York.

United Nations Economic and Social Council (2008). The Criteria for the Identification of Tourism Potentials. Available at

<http://www.un.org/special.rep/ohrll/idc/idc%20criteria.htm>

Accessed December 4, 2010

Weidenfeld, A. (2010) "Iconicity and 'Flagshipness' of Tourist Attractions." *Annals of Tourism Research*, 37 (3) 851–854

Wall, G. & Mathieson, A (2006). Tourism: Changes, Impacts and Opportunities, Pearson Education Limited. England.

World Tourism Organization (WHO), (2009). National and Regional Tourism Planning: Methodologies and Case Studies. London Routleyde.

World Commission on Environment and\_ Oxford: oxford university Press. Development (WCED) (1987). Our Common Future

**APPENDIX I**

**DEPARTMENT OF URBAN AND REGIONAL PLANNING**

**FACULTY OF ENVIRONMENTAL DESIGN**

**AHMADU BELLO UNIVERSITY, ZARIA**

**QUESTIONNAIRE**

**ASSESSMENT OF TOURISM POTENTIALS IN KADUNA STATE**

**INTRODUCTION**

This research questionnaire aims at collecting data for purely academic purpose. The information obtained through this medium will be treated absolutely confidential. The researcher therefore, wishes to stress the need for sincerity and accuracy in giving information as vital ingredients for a successful research. Thank you.

*NOTE: This questionnaire is meant for experienced tourist, and experts in different fields of study that are around these potential sites included in this research..*

**INSTRUCTIONS:** This questionnaire is made up of two sections, A and B.

**SECTION A:**

This contains a set of social, environmental and physical attributes, to be ranked according to respondent preferences in enhancing the development of the tourism potentials known by each respondent.

**SECTION B:**

This section contains the result of section A , which is to be scaled, from **0-1**, which will be scaled, with values ranging from, **0.1, 0.2,0.3-1, (0.1)=worst condition and 1 refers to the best**, by respondents.

**SECTION A**

**1 PERSONAL DATA**

NAME.....

OCCUPATION.....

NAME OF LOCALITY.....

## 2 RANKING OF VARIABLES (assigning weights)

Please kindly rank the following variables according to your preference in enhancing tourism potential in your locality based on your opinion:

1) **Physical (Wp) aspects** include geographic terrain, regional connectivity and vehicular accessibility, versatility in accommodation system, guide and tourist information factors, local souvenirs, tele-communications systems, availability and of quality and special foods, parking and other recreational facilities.

2) **Social (Ws) factors** include existing tourist influx (for existing tourist spots only), intensity of fairs and festivals, timing to visit a spot, duration of stay, compatibility of the spot with surrounding land use, safety and security of the visitors, probability of social crimes, behavioral aspects of the operators of service providers etc.

3) **Environmental (We) aspects** are probability of natural calamity during a specific time window, natural and anthropogenic threat, hazardous land use, quality of air and water pollution etc.

.3 (please tick the ranks based on your preferences).**rank-1=most preferred** and rank-5=least preferred.

Attributes	Rank -1	Rank-2	Rank-3	Rank-4	Rank-5
Geographic terrain					
Regional connectivity					
Vehicular accessibility					
Versality in accommodation system					
Guide and tourist information					
Local					

souvenir's					
Special foods					
Parking spaces					
Recreational facilities					
Tourist influx					
Intensity of fair's and festivals					
Duration of stay					
Timing to visit a spot					
Natural calamity					
Hazardous land use					
Water and air pollution					

## SECTION B

This section scale the result rank in section (A)

### INTEPRETATION OF THE TABLE

**Social aspect, includes the following:** **S<sub>1</sub>** refers to-Tourist influx,**S<sub>2</sub>** refers to- Average duration of stay and **S<sub>3</sub>** ,Intensity of fairs and festivals

**Physical aspect, includes the following:** **P<sub>1</sub>** refers to- Connectivity and Accessibility, **P<sub>2</sub>** – Accommodation,**P<sub>3</sub>**-Vehicular Accessibility,**P<sub>4</sub>**–Food and Market,**P<sub>5</sub>**-Information and Guide,**P<sub>6</sub>**- Car parking facility,**P<sub>7</sub>**-Souvenir's

**This table please seek your opinion about these potentials listed below of which your**

**Familiar with:**

(Please kindly assign the most appropriate scale to the potential in your locality)

Scales ranges from, 0.2-1, (0.1, refers to the lowest value), WHILE, (1, is the highest).

Zones	Spots	S <sub>1</sub>	S <sub>2</sub>	S <sub>3</sub>	P <sub>1</sub>	P <sub>2</sub>	P <sub>3</sub>	P <sub>4</sub>	P <sub>5</sub>	P <sub>6</sub>	P <sub>7</sub>
Birin Gwari	Kamuku National park										
	Birin Gwari old settlement										
	Dutse mai Nono										
	Dogon Ruwa water falls										
	Guaron Dutse										
Giwa	Kabarin Allah										
Igabi	Relics of Amina city walls										
	Trappco Ranch and Resort										
	Fifth Chucker and resort										
	Kagimi Dam										
	Kufena Hill										
	Zaria Dam										

Zaria	St, Bartholomew Church										
	Zaria city wall										
	Emir's palace										
Kaduna North	Lord Lugart hall										
	Arewa house										
	Sultan Bello mosque										
	Lord Lugard bridge										
	Hassan katsina park										
Ikara	Dutsin Zaki Ikara										
	Dutsin Longu Ikara										
	Dutsin Danlawai kurmin kogi										
Jaba	Nok ages cave's hill										
	Terracuta head										
	Germinated tree on flat stone										
	Samban hill										
	Ninzon water falls										



Jama'a	Gwong hill										
Kajuru	Pampada hill										
	Kajuru castle holiday										
	Kagoro hill (with numerous caves)										
	Katagwan foot print										
Sanga	Mada hills										
	Gwantu falls										
Zangon Kataf	Avak at zango village										
	Matsirga water falls										
	Abet hills										

**THANKS FOR YOUR CO-OPERATION.**